

For Research Use Only

SF3A2 Polyclonal antibody

Catalog Number: 15596-1-AP

2 Publications



Basic Information

Catalog Number:

15596-1-AP

Size:

500 µg/ml

Source:

Rabbit

Isotype:

IgG

Immunogen Catalog Number:

AG7953

GenBank Accession Number:

BC004434

GeneID (NCBI):

8175

UNIPROT ID:

Q15428

Full Name:

splicing factor 3a, subunit 2, 66kDa

Calculated MW:

66 kDa

Observed MW:

66 kDa

Purification Method:

Antigen affinity purification

Recommended Dilutions:

WB 1:500-1:2000

IHC 1:20-1:200

Applications

Tested Applications:

IHC, WB, ELISA

Cited Applications:

WB, IP, IF, CoIP

Species Specificity:

human, mouse, rat

Cited Species:

human, rat

Note-IHC: suggested antigen retrieval with TE buffer pH 9.0; (*) Alternatively, antigen retrieval may be performed with citrate buffer pH 6.0

Positive Controls:

WB : NIH/3T3 cells, HeLa cells

IHC : human endometrial cancer tissue,

Background Information

Notable Publications

Author	Pubmed ID	Journal	Application
Zhe Chen	28878014	J Biol Chem	IP
Qingxia Huang	38101749	J Adv Res	WB, IF, CoIP

Storage

Storage:

Store at -20°C. Stable for one year after shipment.

Storage Buffer:

PBS with 0.02% sodium azide and 50% glycerol pH 7.3.

Aliquoting is unnecessary for -20°C storage

For technical support and original validation data for this product please contact:

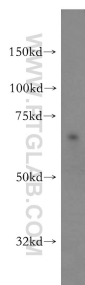
T: 4006900926

E: Proteintech-CN@ptglab.com

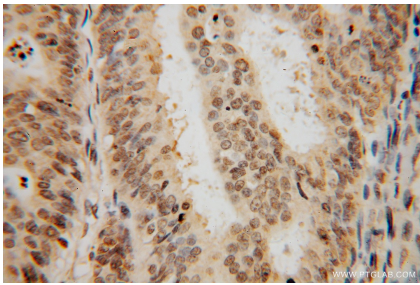
W: ptgcn.com

This product is exclusively available under Proteintech Group brand and is not available to purchase from any other manufacturer.

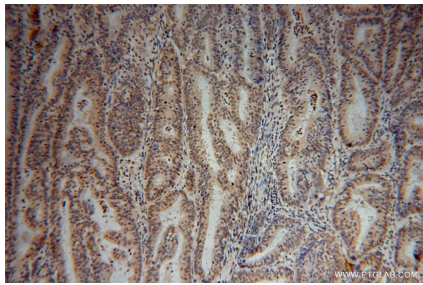
Selected Validation Data



NIH/3T3 cells were subjected to SDS PAGE followed by western blot with 15596-1-AP (SF3A2 antibody) at dilution of 1:400 incubated at room temperature for 1.5 hours.



Immunohistochemical analysis of paraffin-embedded human endometrial cancer using 15596-1-AP (SF3A2 antibody) at dilution of 1:50 (under 40x lens).



Immunohistochemical analysis of paraffin-embedded human endometrial cancer using 15596-1-AP (SF3A2 antibody) at dilution of 1:50 (under 10x lens).