

For Research Use Only

PAIP2 Polyclonal antibody

Catalog Number: 15583-1-AP

3 Publications



Basic Information

Catalog Number:

15583-1-AP

Size:

400 µg/ml

Source:

Rabbit

Isotype:

IgG

Immunogen Catalog Number:

AG7119

GenBank Accession Number:

BC001716

GeneID (NCBI):

51247

UNIPROT ID:

Q9BPZ3

Full Name:

poly(A) binding protein interacting protein 2

Calculated MW:

15 kDa

Observed MW:

26 kDa

Purification Method:

Antigen affinity purification

Recommended Dilutions:

WB 1:500-1:1000

IP 0.5-4.0 µg for 1.0-3.0 mg of total protein lysate

IF/ICC 1:50-1:500

Applications

Tested Applications:

WB, IF/ICC, IP, ELISA

Cited Applications:

WB, IHC, IP

Species Specificity:

human, mouse, rat

Cited Species:

human, mouse

Positive Controls:

WB: A431 cells, HeLa cells, Jurkat cells, mouse lung tissue

IP: A431 cells,

IF/ICC: HeLa cells,

Background Information

Notable Publications

Author	Pubmed ID	Journal	Application
Chenyu Wang	36437922	Front Genet	WB
Chenghai Dong	24573276	J Neurosci	IHC
Yuan Gao	39094987	Pharmacol Res	IP

Storage

Storage:

Store at -20°C. Stable for one year after shipment.

Storage Buffer:

PBS with 0.02% sodium azide and 50% glycerol pH 7.3.

Aliquoting is unnecessary for -20°C storage

For technical support and original validation data for this product please contact:

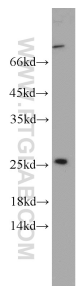
T: 4006900926

E: Proteintech-CN@ptglab.com

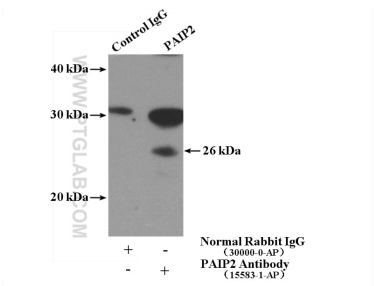
W: ptgcn.com

This product is exclusively available under Proteintech Group brand and is not available to purchase from any other manufacturer.

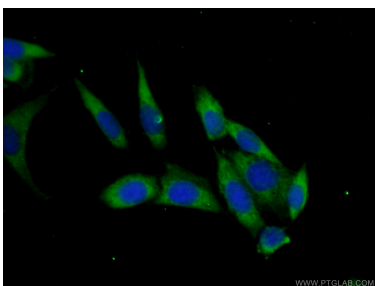
Selected Validation Data



A431 cells were subjected to SDS PAGE followed by western blot with 15583-1-AP (PAIP2 antibody) at dilution of 1:500 incubated at room temperature for 1.5 hours.



IP result of anti-PAIP2 (IP:15583-1-AP, 4ug; Detection:15583-1-AP 1:500) with A431 cells lysate 1200ug.



Immunofluorescent analysis of (-20°C Ethanol) fixed HeLa cells using 15583-1-AP (PAIP2 antibody) at dilution of 1:50 and CoraLite488-Conjugated AffiniPure Goat Anti-Rabbit IgG(H+L).