

GMCL1 Polyclonal antibody

Catalog Number: 15575-1-AP

Basic Information

Catalog Number:

15575-1-AP

Size:

500 µg/ml

Source:

Rabbit

Isotype:

IgG

Immunogen Catalog Number:

AG7929

GenBank Accession Number:

BC007420

GeneID (NCBI):

64395

UNIPROT ID:

Q96IK5

Full Name:

germ cell-less homolog 1
(Drosophila)

Calculated MW:

59 kDa

Observed MW:

55 kDa

Purification Method:

Antigen affinity purification

Recommended Dilutions:

WB 1:1000-1:6000

IHC 1:20-1:200

Applications

Tested Applications:

IHC, WB, ELISA

Species Specificity:

human, mouse, rat

**Note-IHC: suggested antigen retrieval with
TE buffer pH 9.0; (*) Alternatively, antigen
retrieval may be performed with citrate
buffer pH 6.0**

Positive Controls:

WB : mouse heart tissue, mouse skeletal muscle tissue

IHC : human thyroid tissue, human testis tissue

Background Information

GMCL1, also named as GCL, functions in spermatogenesis. It enhances the degradation of MDM2 and increases the amount of p53 probably by modulating the nucleocytoplasmic transport. In WB test, the antibody recognizes 55 kDa band in our detection.

Storage

Storage:

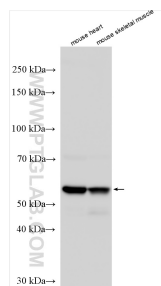
Store at -20°C. Stable for one year after shipment.

Storage Buffer:

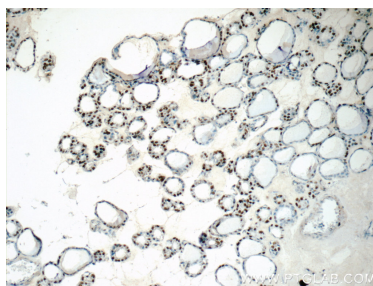
PBS with 0.02% sodium azide and 50% glycerol pH 7.3.

Aliquoting is unnecessary for -20°C storage

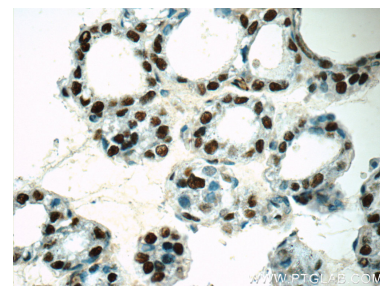
Selected Validation Data



Various lysates were subjected to SDS PAGE followed by western blot with 15575-1-AP (GMCL1 antibody) at dilution of 1:3000 incubated at room temperature for 1.5 hours.



Immunohistochemical analysis of paraffin-embedded human thyroid tissue slide using 15575-1-AP (GMCL1 Antibody) at dilution of 1:50.



Immunohistochemical analysis of paraffin-embedded human thyroid tissue slide using 15575-1-AP (GMCL1 Antibody) at dilution of 1:50.