

For Research Use Only

SEH1L Polyclonal antibody

Catalog Number: 15565-1-AP **1 Publications**



Basic Information

Catalog Number:

15565-1-AP

Size:

300 ug/ml

Source:

Rabbit

Isotype:

IgG

Immunogen Catalog Number:

AG7795

GenBank Accession Number:

BC012430

GeneID (NCBI):

81929

UNIPROT ID:

Q96EE3

Full Name:

SEH1-like (S. cerevisiae)

Calculated MW:

39.6 kDa

Observed MW:

36-39 kDa

Purification Method:

Antigen affinity purification

Recommended Dilutions:

WB 1:2000-1:12000

IF/ICC 1:500-1:2000

Applications

Tested Applications:

WB, IF/ICC, ELISA

Cited Applications:

WB

Species Specificity:

human

Cited Species:

human

Positive Controls:

WB : HEK-293 cells, HeLa cells

IF/ICC : A549 cells,

Background Information

Notable Publications

Author	Pubmed ID	Journal	Application
Ziyang Feng	39095556	Apoptosis	WB

Storage

Storage:

Store at -20°C. Stable for one year after shipment.

Storage Buffer:

PBS with 0.02% sodium azide and 50% glycerol pH 7.3.

Aliquoting is unnecessary for -20°C storage

For technical support and original validation data for this product please contact:

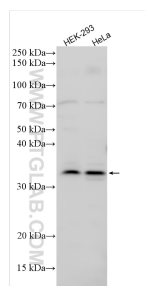
T: 4006900926

E: Proteintech-CN@ptglab.com

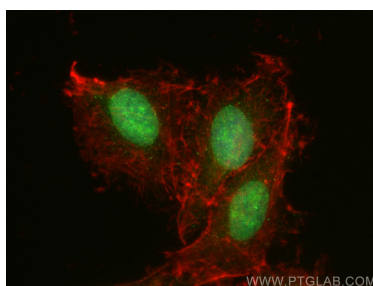
W: ptgcn.com

This product is exclusively available under Proteintech Group brand and is not available to purchase from any other manufacturer.

Selected Validation Data



Various lysates were subjected to SDS PAGE followed by western blot with 15565-1-AP (SEH1L antibody) at dilution of 1:6000 incubated at room temperature for 1.5 hours.



Immunofluorescent analysis of (4% PFA) fixed A549 cells using SEH1L antibody (15565-1-AP) at dilution of 1:1000 and Multi-rAb CoraLite® Plus 488-Goat Anti-Rabbit Recombinant Secondary Antibody (H+L) (RGAR002).