

For Research Use Only

DIMT1L Polyclonal antibody

Catalog Number: 15563-1-AP **1 Publications**



Basic Information

Catalog Number:

15563-1-AP

Size:

500 µg/ml

Source:

Rabbit

Isotype:

IgG

Immunogen Catalog Number:

AG7721

GenBank Accession Number:

BC002841

GeneID (NCBI):

27292

UNIPROT ID:

Q9UNQ2

Full Name:

DIM1 dimethyladenosine transferase

1-like (*S. cerevisiae*)

Calculated MW:

35 kDa

Observed MW:

35 kDa

Purification Method:

Antigen affinity purification

Recommended Dilutions:

WB 1:500-1:1000

Applications

Tested Applications:

WB, ELISA

Cited Applications:

WB

Species Specificity:

human, mouse, rat

Cited Species:

human

Positive Controls:

WB : HeLa cells, Raji cells, Jurkat cells

Background Information

Notable Publications

Author	Pubmed ID	Journal	Application
James C Murphy	36653366	Nat Commun	WB

Storage

Storage:

Store at -20°C. Stable for one year after shipment.

Storage Buffer:

PBS with 0.02% sodium azide and 50% glycerol pH 7.3.

Aliquoting is unnecessary for -20°C storage

For technical support and original validation data for this product please contact:

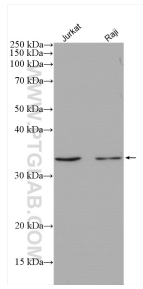
T: 4006900926

E: Proteintech-CN@ptglab.com

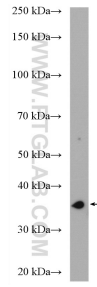
W: ptgcn.com

This product is exclusively available under Proteintech Group brand and is not available to purchase from any other manufacturer.

Selected Validation Data



Various lysates were subjected to SDS PAGE followed by western blot with 15563-1-AP (DIMT1L antibody) at dilution of 1:1500 incubated at room temperature for 1.5 hours.



HeLa cells were subjected to SDS PAGE followed by western blot with 15563-1-AP (DIMT1L antibody) at dilution of 1:800 incubated at room temperature for 1.5 hours.