

For Research Use Only

# NDUFA1 Polyclonal antibody, PBS Only

Catalog Number: 15561-1-PBS



## Basic Information

Catalog Number:

15561-1-PBS

Concentration:

1 mg/ml

Source:

Rabbit

Isotype:

IgG

Immunogen Catalog Number:

AG7206

GenBank Accession Number:

BC000266

GeneID (NCBI):

4694

UNIPROT ID:

O15239

Full Name:

NADH dehydrogenase (ubiquinone) 1

alpha subcomplex, 1, 7.5kDa

Calculated MW:

7.5 kDa

Observed MW:

8 kDa

Purification Method:

Antigen affinity purification

## Applications

Tested Applications:

WB, IHC, Indirect ELISA

Species Specificity:

human, mouse, rat

## Background Information

The NDUFA1 gene encoding the MWFE polypeptide is located on the X chromosome. The NDUFA1 gene product (MWFE protein) is essential for activity of complex I in mammalian mitochondria, and it is predicted to be a membrane protein (PMID: 10200266).

## Storage

Storage:

Store at -80°C.

The product is shipped with ice packs. Upon receipt, store it immediately at -80°C

Storage Buffer:

PBS only, pH7.3

For technical support and original validation data for this product please contact:

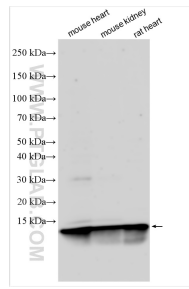
T: 4006900926

E: [Proteintech-CN@ptglab.com](mailto:Proteintech-CN@ptglab.com)

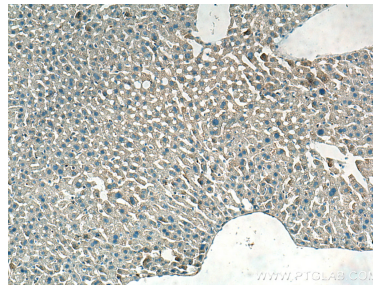
W: [ptgcn.com](http://ptgcn.com)

This product is exclusively available under Proteintech Group brand and is not available to purchase from any other manufacturer.

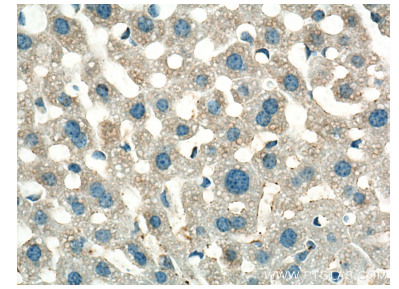
## Selected Validation Data



Various lysates were subjected to SDS PAGE followed by western blot with 15561-1-AP (NDUFA1 antibody) at dilution of 1:1000 incubated at room temperature for 1.5 hours. This data was developed using the same antibody clone with 15561-1-PBS in a different storage buffer formulation.



Immunohistochemical analysis of paraffin-embedded mouse liver tissue slide using 15561-1-AP (NDUFA1 antibody) at dilution of 1:200 (under 10x lens). Heat mediated antigen retrieval with Tris-EDTA buffer (pH 9.0). This data was developed using the same antibody clone with 15561-1-PBS in a different storage buffer formulation.



Immunohistochemical analysis of paraffin-embedded mouse liver tissue slide using 15561-1-AP (NDUFA1 antibody) at dilution of 1:200 (under 40x lens). Heat mediated antigen retrieval with Tris-EDTA buffer (pH 9.0). This data was developed using the same antibody clone with 15561-1-PBS in a different storage buffer formulation.