

For Research Use Only

CSTF1 Polyclonal antibody

Catalog Number: 15537-1-AP



Basic Information

Catalog Number:

15537-1-AP

Size:

350 µg/ml

Source:

Rabbit

Isotype:

IgG

Immunogen Catalog Number:

AG7874

GenBank Accession Number:

BC007425

GeneID (NCBI):

1477

UNIPROT ID:

Q05048

Full Name:

cleavage stimulation factor, 3' pre-RNA, subunit 1, 50kDa

Calculated MW:

48 kDa

Observed MW:

50 kDa

Purification Method:

Antigen affinity purification

Recommended Dilutions:

WB 1:1000-1:4000

IP 0.5-4.0 µg for 1.0-3.0 mg of total protein lysate

IF/ICC 1:50-1:500

Applications

Tested Applications:

WB, IF/ICC, IP, ELISA

Species Specificity:

human

Positive Controls:

WB : HeLa cells, HEK-293T cells, A549 cells

IP : HeLa cells,

IF/ICC : HeLa cells,

Background Information

Cleavage stimulation factor (CstF), a heterotrimeric protein with subunits of 77, 64, and 50 kDa (CstF-77, -64, and -50), is a polyadenylation factor that helps to specify the site of processing. CstF recognizes the G+U-rich element, a sequence located downstream of the cleavage site. CstF-50 unit interacts with the COOH-terminal domain of the RNAP II largest subunit (CTD).

Storage

Storage:

Store at -20°C. Stable for one year after shipment.

Storage Buffer:

PBS with 0.02% sodium azide and 50% glycerol pH 7.3.

Aliquoting is unnecessary for -20°C storage

For technical support and original validation data for this product please contact:

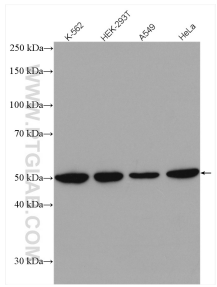
T: 4006900926

E: Proteintech-CN@ptglab.com

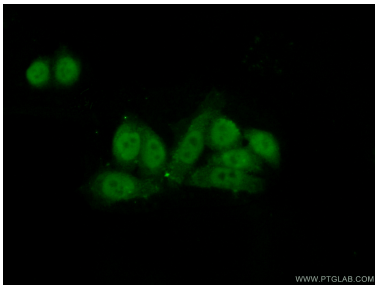
W: ptgcn.com

This product is exclusively available under Proteintech Group brand and is not available to purchase from any other manufacturer.

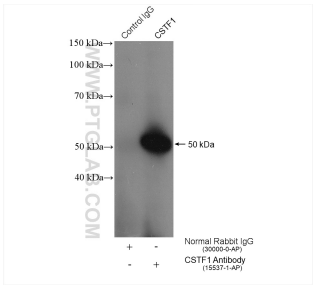
Selected Validation Data



Various lysates were subjected to SDS PAGE followed by western blot with 15537-1-AP (CSTF1 antibody) at dilution of 1:2000 incubated at room temperature for 1.5 hours.



Immunofluorescent analysis of (10% Formaldehyde) fixed HeLa cells using 15537-1-AP (CSTF1 antibody) at dilution of 1:50 and Alexa Fluor 488-conjugated AffiniPure Goat Anti-Rabbit IgG(H+L).



IP result of anti-CSTF1 (IP:15537-1-AP, 4ug; Detection:15537-1-AP 1:500) with HeLa cells lysate 680 ug.