

For Research Use Only

RPL36AL Polyclonal antibody

Catalog Number: 15535-1-AP



Basic Information

Catalog Number:

15535-1-AP

Size:

450 µg/ml

Source:

Rabbit

Isotype:

IgG

Immunogen Catalog Number:

AG7853

GenBank Accession Number:

BC000741

GeneID (NCBI):

6166

UNIPROT ID:

Q969Q0

Full Name:

ribosomal protein L36a-like

Calculated MW:

12 kDa

Purification Method:

Antigen affinity purification

Recommended Dilutions:

IHC 1:20-1:200

Applications

Tested Applications:

IHC, ELISA

Species Specificity:

human

Positive Controls:

IHC : human breast cancer tissue, human liver cancer tissue

Note-IHC: suggested antigen retrieval with TE buffer pH 9.0; (*) Alternatively, antigen retrieval may be performed with citrate buffer pH 6.0

Background Information

Storage

Storage:

Store at -20°C. Stable for one year after shipment.

Storage Buffer:

PBS with 0.02% sodium azide and 50% glycerol pH 7.3.

Aliquoting is unnecessary for -20°C storage

For technical support and original validation data for this product please contact:

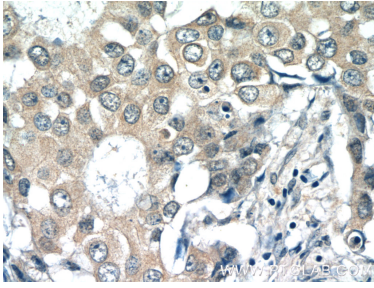
T: 4006900926

E: Proteintech-CN@ptglab.com

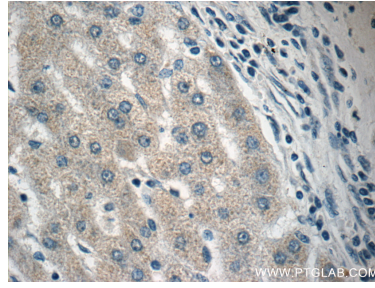
W: ptgcn.com

This product is exclusively available under Proteintech Group brand and is not available to purchase from any other manufacturer.

Selected Validation Data



Immunohistochemical analysis of paraffin-embedded human breast cancer tissue slide using 15535-1-AP (RPL36AL Antibody) at dilution of 1:50 (under 40x lens).



Immunohistochemical analysis of paraffin-embedded human liver cancer tissue slide using 15535-1-AP (RPL36AL Antibody) at dilution of 1:50 (under 40x lens).