

For Research Use Only

# KCTD12 Polyclonal antibody, PBS Only

Catalog Number: 15523-1-PBS

Featured Product



## Basic Information

Catalog Number:

15523-1-PBS

Concentration:

1 mg/ml

Source:

Rabbit

Isotype:

IgG

Immunogen Catalog Number:

AG5716

GenBank Accession Number:

BC013764

GeneID (NCBI):

115207

UNIPROT ID:

Q96CX2

Full Name:

potassium channel tetramerisation domain containing 12

Calculated MW:

36 kDa

Observed MW:

36 kDa

Purification Method:

Antigen affinity purification

## Applications

Tested Applications:

WB, IHC, IF/ICC, Indirect ELISA

Species Specificity:

human, mouse, rat

## Background Information

KCTD12 also known as PFET1 or PFETIN, which contains a voltage-gated potassium (K<sup>+</sup>) channel tetramerization T1 domain and a BTB/POZ (Bric-a-brac, Tram-track, Broad complex poxvirus and zinc finger) domain, belongs to the KCTD family and was initially identified in cochlea. In addition to being a K<sup>+</sup> channel protein that responds to membrane potential<sup>7</sup>, KCTD12 also acts as an auxiliary subunit of GABAB ( $\gamma$ -aminobutyric acid type B) receptors, which regulate emotionality and neuronal excitability.

## Storage

Storage:

Store at -80°C.

The product is shipped with ice packs. Upon receipt, store it immediately at -80°C

Storage Buffer:

PBS only, pH7.3

For technical support and original validation data for this product please contact:

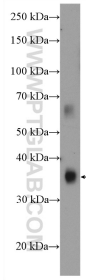
T: 4006900926

E: Proteintech-CN@ptglab.com

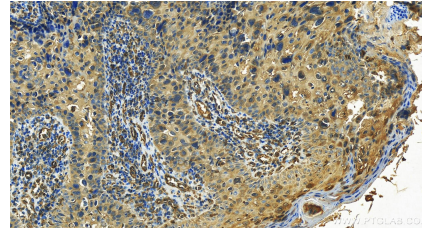
W: ptgcn.com

This product is exclusively available under Proteintech Group brand and is not available to purchase from any other manufacturer.

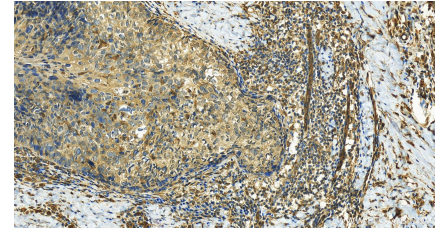
## Selected Validation Data



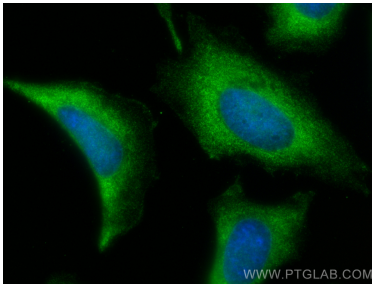
mouse brain tissue were subjected to SDS PAGE followed by western blot with 15523-1-AP (KCTD12 antibody) at dilution of 1:1000 incubated at room temperature for 1.5 hours. This data was developed using the same antibody clone with 15523-1-PBS in a different storage buffer formulation.



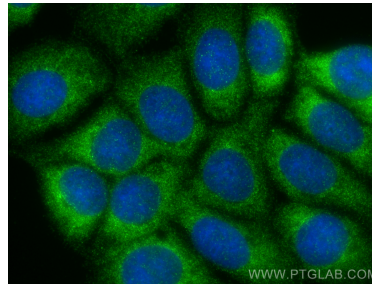
Immunohistochemical analysis of paraffin-embedded human Bowen disease slide using 15523-1-AP (KCTD12 antibody) at dilution of 1:200 (under 20x lens). Heat mediated antigen retrieval with Tris-EDTA buffer (pH 9.0). This data was developed using the same antibody clone with 15523-1-PBS in a different storage buffer formulation.



Immunohistochemical analysis of paraffin-embedded human Bowen disease slide using 15523-1-AP (KCTD12 antibody) at dilution of 1:200 (under 20x lens). Heat mediated antigen retrieval with Tris-EDTA buffer (pH 9.0). This data was developed using the same antibody clone with 15523-1-PBS in a different storage buffer formulation.



Immunofluorescent analysis of (-20°C Ethanol) fixed HeLa cells using KCTD12 antibody (15523-1-AP) at dilution of 1:400 and CoraLite®488-Conjugated Goat Anti-Rabbit IgG(H+L) (SA00013-2). This data was developed using the same antibody clone with 15523-1-PBS in a different storage buffer formulation.



Immunofluorescent analysis of (-20°C Methanol) fixed MCF-7 cells using KCTD12 antibody (15523-1-AP) at dilution of 1:400 and CoraLite®488-Conjugated Goat Anti-Rabbit IgG(H+L) (SA00013-2). This data was developed using the same antibody clone with 15523-1-PBS in a different storage buffer formulation.