

For Research Use Only

MSH2 Polyclonal antibody

Catalog Number:15520-1-AP

Featured Product

29 Publications



Basic Information

Catalog Number:

15520-1-AP

Size:

500 ug/ml

Source:

Rabbit

Isotype:

IgG

Immunogen Catalog Number:

AG7835

GenBank Accession Number:

BC021566

GeneID (NCBI):

4436

UNIPROT ID:

P43246

Full Name:

mutS homolog 2, colon cancer, nonpolyposis type 1 (E. coli)

Calculated MW:

105 kDa

Observed MW:

100 kDa-105 kDa

Purification Method:

Antigen affinity purification

Recommended Dilutions:

WB 1:500-1:2000

IP 0.5-4.0 ug for 1.0-3.0 mg of total protein lysate

IHC 1:50-1:500

IF/ICC 1:400-1:1600

Applications

Tested Applications:

WB, IHC, IF/ICC, FC (Intra), IP, ELISA

Cited Applications:

WB, IHC, IF, IP

Species Specificity:

human

Cited Species:

human, mouse

Note-IHC: suggested antigen retrieval with TE buffer pH 9.0; (*) Alternatively, antigen retrieval may be performed with citrate buffer pH 6.0

Positive Controls:

WB : HeLa cells, Caco-2 cells, SW480 cells

IP : HeLa cells,

IHC : human stomach cancer tissue, human tonsil tissue

IF/ICC : HeLa cells,

Background Information

MSH2, named for its homologous to the E.coli MutS gene, takes part in DNA mismatch repair(MMR) to maintain the stability of DNA. MSH2 contains a helix-turn-helix domain, which responds for binding to DNA. Also, MSH2 has a direct role in mutation avoidance and micro-satellite stability in cell.

Notable Publications

| Author | Pubmed ID | Journal | Application |
|------------|-----------|---------------|-------------|
| Bin Zhang | 32964498 | Neurochem Res | IHC |
| Xuting Ran | 35664732 | Front Oncol | IHC |
| Jun Zhu | 32396667 | J Surg Oncol | IHC |

Storage

Storage:

Store at -20°C. Stable for one year after shipment.

Storage Buffer:

PBS with 0.02% sodium azide and 50% glycerol pH 7.3.

Aliquoting is unnecessary for -20°C storage

For technical support and original validation data for this product please contact:

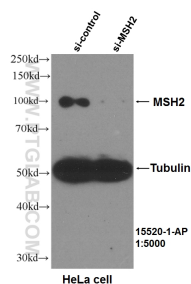
T: 4006900926

E: Proteintech-CN@ptglab.com

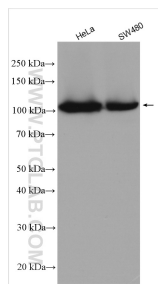
W: ptgcn.com

This product is exclusively available under Proteintech Group brand and is not available to purchase from any other manufacturer.

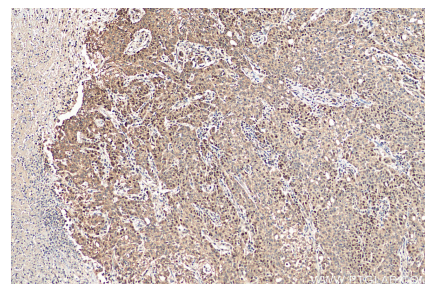
Selected Validation Data



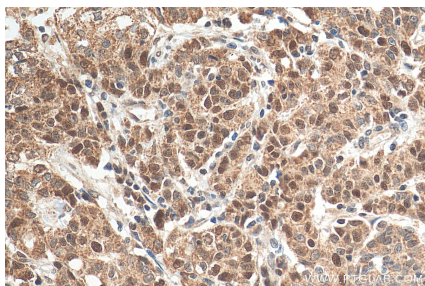
WB results of MSH2 (15520-1-AP, 1:5000) antibody with si-Control and si-MSH2 transfected HeLa cells..



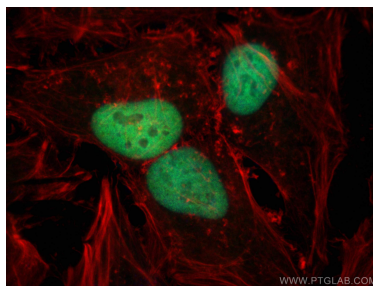
Various lysates were subjected to SDS PAGE followed by western blot with 15520-1-AP (MSH2 antibody) at dilution of 1:1000 incubated at room temperature for 1.5 hours.



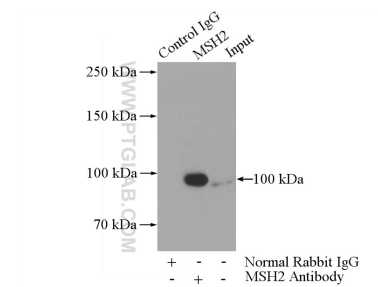
Immunohistochemical analysis of paraffin-embedded human stomach cancer tissue slide using 15520-1-AP (MSH2 antibody) at dilution of 1:200 (under 10x lens). Heat mediated antigen retrieval with Tris-EDTA buffer (pH 9.0).



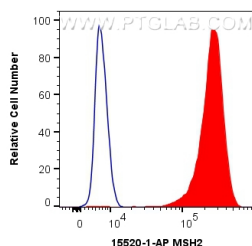
Immunohistochemical analysis of paraffin-embedded human stomach cancer tissue slide using 15520-1-AP (MSH2 antibody) at dilution of 1:200 (under 40x lens). Heat mediated antigen retrieval with Tris-EDTA buffer (pH 9.0).



Immunofluorescent analysis of (4% PFA) fixed HeLa cells using MSH2 antibody (15520-1-AP) at dilution of 1:800 and Multi-rAb CoraLite® Plus 488-Goat Anti-Rabbit Recombinant Secondary Antibody (H+L) (RGAR002), CL594-Phalloidin (red).



IP result of anti-MSH2 (IP:15520-1-AP, 5ug; Detection:15520-1-AP 1:500) with HeLa cells lysate 2000ug.



1X10⁶ HeLa cells were intracellularly stained with 0.4 ug Anti-Human MSH2 (15520-1-AP) and CoraLite® 488-Conjugated AffiniPure Goat Anti-Rabbit IgG(H+L) at dilution 1:1000 (red), or 0.4 ug Isotype Control. Cells were fixed and permeabilized with Transcription Factor Staining Buffer Kit (PF00011).