

SMU1 Polyclonal antibody

Catalog Number: 15511-1-AP

Basic Information

Catalog Number: 15511-1-AP	GenBank Accession Number: BC002876	Purification Method: Antigen affinity purification
Size: 240 µg/ml	GeneID (NCBI): 55234	Recommended Dilutions: WB 1:500-1:1000
Source: Rabbit	UNIPROT ID: Q2TAY7	IHC 1:20-1:200
Isotype: IgG	Full Name: smu-1 suppressor of mec-8 and unc-52 homolog (C. elegans)	IF/ICC 1:10-1:100
Immunogen Catalog Number: AG7688	Calculated MW: 58 kDa	
	Observed MW: 45-50 kDa	

Applications

Tested Applications:
WB, IHC, IF/ICC, ELISA

Species Specificity:
human, mouse, rat

Note-IHC: suggested antigen retrieval with **TE buffer pH 9.0; (*) Alternatively, antigen retrieval may be performed with citrate buffer pH 6.0**

Positive Controls:

WB : mouse liver tissue, K-562 cells

IHC : human kidney tissue, human brain tissue, human hepatocirrhosis tissue, human ovary tissue, human testis tissue

IF/ICC : HepG2 cells,

Background Information

Sum1, belongs to the WD repeat SMU1 family. Human SMU1 is a component of the spliceosome fSAP57(PMID: 15254247). It is possible that the mutation in Smu1 affects spliceosome function, resulting in generation of improper splice variants, which could explain the phenotypes of tsTM18 cells. Some results suggest that Smu1 participates in at least two steps of splicing: splice-site choice and control of accuracy(PMID: 17105761). This antibody is a rabbit polyclonal antibody raised against a region of human REDD1 antigen.

Storage

Storage:

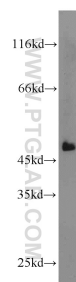
Store at -20°C. Stable for one year after shipment.

Storage Buffer:

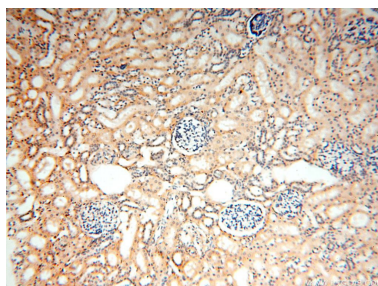
PBS with 0.02% sodium azide and 50% glycerol pH 7.3.

Aliquoting is unnecessary for -20°C storage

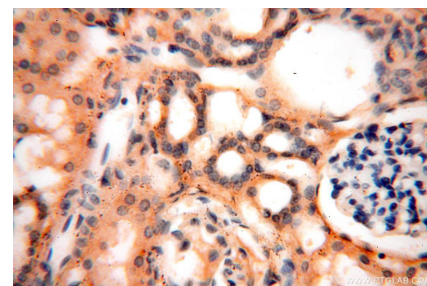
Selected Validation Data



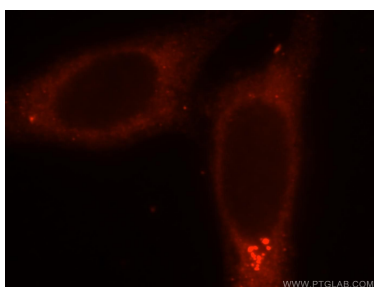
mouse liver tissue were subjected to SDS PAGE followed by western blot with 15511-1-AP (SMU1 antibody) at dilution of 1:1000 incubated at room temperature for 1.5 hours.



Immunohistochemical analysis of paraffin-embedded human kidney using 15511-1-AP (SMU1 antibody) at dilution of 1:100 (under 10x lens).



Immunohistochemical analysis of paraffin-embedded human kidney using 15511-1-AP (SMU1 antibody) at dilution of 1:100 (under 40x lens).



Immunofluorescent analysis of HepG2 cells, using SMU1 antibody 15511-1-AP at 1:25 dilution and Rhodamine-labeled goat anti-rabbit IgG (red).