

For Research Use Only

transgelin/SM22-specific Polyclonal antibody



Catalog Number: 15502-1-AP

3 Publications

Basic Information

Catalog Number: 15502-1-AP	GenBank Accession Number: NM_003186	Purification Method: Antigen affinity purification
Size: 280 µg/ml	GeneID (NCBI): 6876	Recommended Dilutions: WB 1:300-1:600 IHC 1:100-1:4000
Source: Rabbit	UNIPROT ID: Q01995	
Isotype: IgG	Full Name: transgelin	
	Calculated MW: 22 kDa	
	Observed MW: 22-25 kDa	

Applications

Tested Applications: IHC, WB, ELISA	Positive Controls: WB : mouse colon tissue, IHC : human heart tissue, human colon tissue
Cited Applications: WB	
Species Specificity: human, mouse, rat	
Cited Species: human, mouse	
Note-IHC: suggested antigen retrieval with TE buffer pH 9.0; (*) Alternatively, antigen retrieval may be performed with citrate buffer pH 6.0	

Background Information

The transgelin family is a group of proteins that belong to 22 kDa actin-related corpnin superfamily. Of all three isoforms, transgelin 1 is the best characterized. Transgelin 1, also known as SM22alpha, is a specific marker for differentiated smooth muscle cells. Transgelin 2, also known as SM22 beta, is expressed by both smooth muscle and non-smooth muscle cells in a temporally and spatially regulated pattern. Transgelin 3, also known as NP25, is only found in highly differentiated neuronal cells. This antibody is specific to transgelin 1. It does not cross-react with transgelin 2 or 3.

Notable Publications

Author	Pubmed ID	Journal	Application
Weitie Wang	33510768	Front Genet	WB
Fang He	35178409	Front Med (Lausanne)	WB
B. Paul Herring	28039430	Physiol Genomics	WB

Storage

Storage:
Store at -20°C. Stable for one year after shipment.
Storage Buffer:
PBS with 0.02% sodium azide and 50% glycerol pH 7.3.
Aliquoting is unnecessary for -20°C storage

For technical support and original validation data for this product please contact:

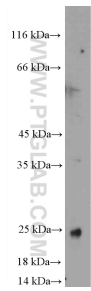
T: 4006900926

E: Proteintech-CN@ptglab.com

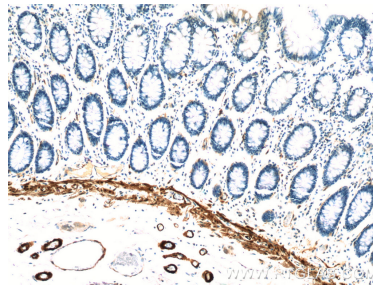
W: ptgcn.com

This product is exclusively available under Proteintech Group brand and is not available to purchase from any other manufacturer.

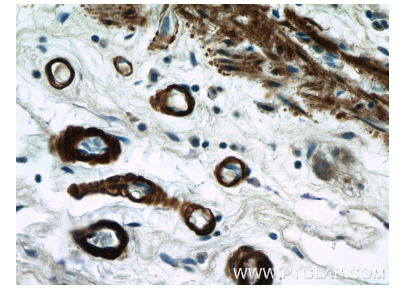
Selected Validation Data



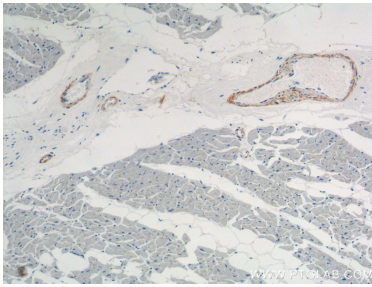
mouse colon tissue were subjected to SDS PAGE followed by western blot with 15502-1-AP (transgelin/SM22-specific antibody at dilution of 1:600 incubated at room temperature for 1.5 hours.



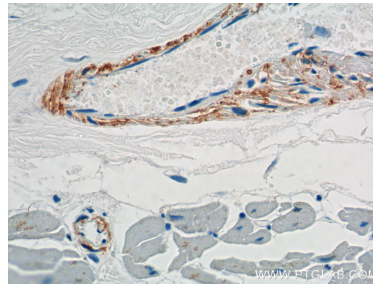
Immunohistochemical analysis of paraffin-embedded human colon tissue slide using 15502-1-AP (transgelin/SM22-specific antibody at dilution of 1:200 (under 10x lens).



Immunohistochemical analysis of paraffin-embedded human colon tissue slide using 15502-1-AP (transgelin/SM22-specific antibody at dilution of 1:200 (under 40x lens).



Immunohistochemical analysis of paraffin-embedded human heart tissue slide using 15502-1-AP (transgelin/SM22-specific antibody at dilution of 1:2000 (under 10x lens).



Immunohistochemical analysis of paraffin-embedded human heart tissue slide using 15502-1-AP (transgelin/SM22-specific antibody at dilution of 1:2000 (under 40x lens).