

For Research Use Only

Pancreatic Polypeptide Polyclonal antibody

Catalog Number: 15493-1-AP

4 Publications



Basic Information

Catalog Number:

15493-1-AP

Size:

500 µg/ml

Source:

Rabbit

Isotype:

IgG

Immunogen Catalog Number:

AG7886

GenBank Accession Number:

BC032225

GeneID (NCBI):

5539

UNIPROT ID:

P01298

Full Name:

pancreatic polypeptide

Calculated MW:

10 kDa

Purification Method:

Antigen affinity purification

Recommended Dilutions:

IHC 1:1000-1:4000

IF-P 1:50-1:500

Applications

Tested Applications:

IHC, IF-P, FC (Intra), ELISA

Cited Applications:

IHC, IF

Species Specificity:

human, mouse, rat

Cited Species:

mouse

Note-IHC: suggested antigen retrieval with TE buffer pH 9.0; (*) Alternatively, antigen retrieval may be performed with citrate buffer pH 6.0

Positive Controls:

IHC : mouse pancreas tissue,

IF-P : rat pancreas tissue,

Background Information

Notable Publications

Author	Pubmed ID	Journal	Application
Sarah Merz	39427318	Cell Rep	
Nader Goodarzi	38459816	Vet Med Sci	IF
Jiajun Sun	37963393	Diabetes	IF

Storage

Storage:

Store at -20°C. Stable for one year after shipment.

Storage Buffer:

PBS with 0.02% sodium azide and 50% glycerol pH 7.3.

Aliquoting is unnecessary for -20°C storage

For technical support and original validation data for this product please contact:

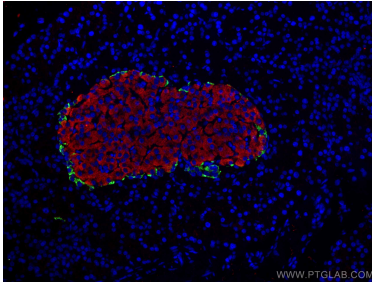
T: 4006900926

E: Proteintech-CN@ptglab.com

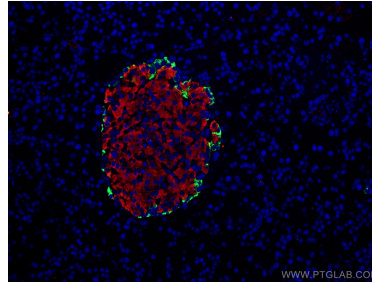
W: ptgcn.com

This product is exclusively available under Proteintech Group brand and is not available to purchase from any other manufacturer.

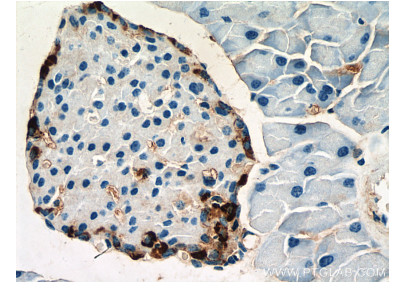
Selected Validation Data



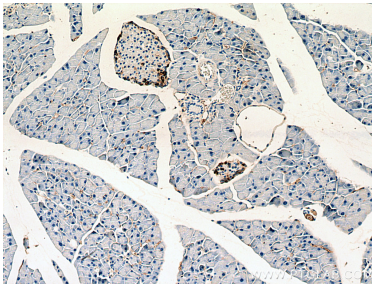
Immunofluorescent analysis of (4% PFA) fixed rat pancreas tissue using Pancreatic Polypeptide antibody (15493-1-AP) at dilution of 1:200 and CoraLite®488-Conjugated Goat Anti-Rabbit IgG(H+L), Pancreatic Polypeptide antibody (15493-1-AP, green) stained on PP cells in rat pancreas islet. Glucagon antibody (67286-1-Ig, Clone: 2A8G1, red) stained on α cells in rat pancreas islet.



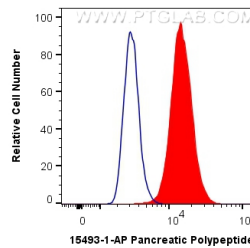
Immunofluorescent analysis of (4% PFA) fixed rat pancreas tissue using Pancreatic Polypeptide antibody (15493-1-AP) at dilution of 1:200 and CoraLite®488-Conjugated Goat Anti-Rabbit IgG(H+L), Pancreatic Polypeptide antibody (15493-1-AP) (green) stained on PP cells in rat pancreas islet. Glucagon antibody (67286-1-Ig, Clone: 2A8G1, red) stained on α cells in rat pancreas islet.



Immunohistochemical analysis of paraffin-embedded mouse pancreas tissue slide using 15493-1-AP (Pancreatic Polypeptide antibody) at dilution of 1:2000 (under 40x lens). Heat mediated antigen retrieval with Tris-EDTA buffer (pH 9.0).



Immunohistochemical analysis of paraffin-embedded mouse pancreas tissue slide using 15493-1-AP (Pancreatic Polypeptide antibody) at dilution of 1:2000 (under 10x lens). Heat mediated antigen retrieval with Tris-EDTA buffer (pH 9.0).



1X10⁶ HepG2 cells were intracellularly stained with 0.4 ug Anti-Human Pancreatic Polypeptide (15493-1-AP) and CoraLite®488-Conjugated Goat Anti-Rabbit IgG(H+L) at dilution 1:1000 (red), or 0.4 ug Control Antibody. Cells were fixed with 4% PFA and permeabilized with Flow Cytometry Perm Buffer (PF00011-C).