

For Research Use Only

UBE2E3 Polyclonal antibody

Catalog Number: 15488-1-AP

4 Publications



Basic Information

Catalog Number:

15488-1-AP

Size:

750 µg/ml

Source:

Rabbit

Isotype:

IgG

Immunogen Catalog Number:

AG7838

GenBank Accession Number:

BC003554

GeneID (NCBI):

10477

UNIPROT ID:

Q969T4

Full Name:

ubiquitin-conjugating enzyme E2E 3
(UBC4/5 homolog, yeast)

Calculated MW:

23 kDa

Observed MW:

23-27 kDa

Purification Method:

Antigen affinity purification

Recommended Dilutions:

WB 1:500-1:3000

IHC 1:20-1:200

Applications

Tested Applications:

IHC, WB, ELISA

Cited Applications:

WB

Species Specificity:

human, mouse, rat

Cited Species:

rat, mouse, monkey

**Note-IHC: suggested antigen retrieval with
TE buffer pH 9.0; (*) Alternatively, antigen
retrieval may be performed with citrate
buffer pH 6.0**

Positive Controls:

WB: Jurkat cells, mouse kidney tissue, mouse liver
tissue, Y79 cells

IHC: human heart tissue, human skeletal muscle
tissue

Background Information

Notable Publications

Author	Pubmed ID	Journal	Application
Kazuhiko Watabe	32686212	Neuropathology	WB
Yiyang Qin	38758800	Sci Adv	WB
Ziyan Xiao	38391926	Cells	WB

Storage

Storage:

Store at -20°C. Stable for one year after shipment.

Storage Buffer:

PBS with 0.02% sodium azide and 50% glycerol pH 7.3.

Aliquoting is unnecessary for -20°C storage

For technical support and original validation data for this product please contact:

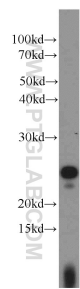
T: 4006900926

E: Proteintech-CN@ptglab.com

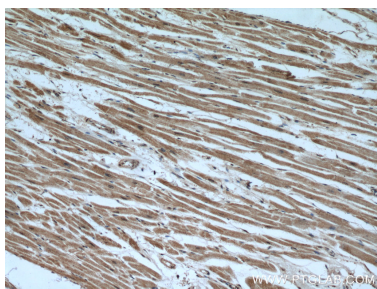
W: ptgcn.com

This product is exclusively available under Proteintech Group brand and is not available to purchase from any other manufacturer.

Selected Validation Data



Jurkat cells were subjected to SDS PAGE followed by western blot with 15488-1-AP (UBE2E3 antibody) at dilution of 1:1000 incubated at room temperature for 1.5 hours.



Immunohistochemical analysis of paraffin-embedded human heart using 15488-1-AP (UBE2E3 antibody) at dilution of 1:50 (under 10x lens).



Immunohistochemical analysis of paraffin-embedded human heart using 15488-1-AP (UBE2E3 antibody) at dilution of 1:50 (under 40x lens).