

# RAB31 Polyclonal antibody

Catalog Number: 15485-1-AP

2 Publications

## Basic Information

## Catalog Number:

15485-1-AP

## Size:

250 µg/ml

## Source:

Rabbit

## Isotype:

IgG

## Immunogen Catalog Number:

AG7833

## GenBank Accession Number:

BC001148

## GeneID (NCBI):

11031

## UNIPROT ID:

Q13636

## Full Name:

RAB31, member RAS oncogene family

## Calculated MW:

22 kDa

## Observed MW:

22 kDa

## Purification Method:

Antigen affinity purification

## Recommended Dilutions:

WB 1:500-1:2000

IHC 1:50-1:500

## Applications

## Tested Applications:

IHC, WB, ELISA

## Cited Applications:

WB, IF

## Species Specificity:

human

## Cited Species:

human

**Note-IHC: suggested antigen retrieval with TE buffer pH 9.0; (\*) Alternatively, antigen retrieval may be performed with citrate buffer pH 6.0**

## Positive Controls:

**WB** : HeLa cells, human placenta tissue, K-562 cells, HepG2 cells

**IHC** : human liver cancer tissue,

## Background Information

RAB31, also named as RAB22b, belongs to small GTP-binding proteins of the RAB family. Rab31 localizes in the trans-Golgi network (TGN) and endosomes. It is required for transport of mannose 6-phosphate receptors (MPRs) from the trans-Golgi network (TGN) to endosomes.

## Notable Publications

Author	Pubmed ID	Journal	Application
Tang Biao	36085041	J Transl Med	WB
Yu-Chan Chang	38939899	J Extracell Biol	WB,IF

## Storage

## Storage:

Store at -20°C. Stable for one year after shipment.

## Storage Buffer:

PBS with 0.02% sodium azide and 50% glycerol pH 7.3.

Aliquoting is unnecessary for -20°C storage

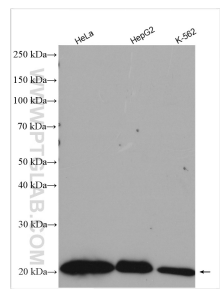
For technical support and original validation data for this product please contact:

T: 4006900926

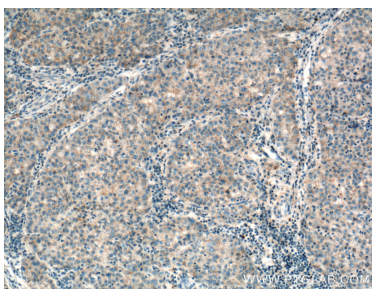
E: [Proteintech-CN@ptglab.com](mailto:Proteintech-CN@ptglab.com)W: [ptgcn.com](http://ptgcn.com)

This product is exclusively available under Proteintech Group brand and is not available to purchase from any other manufacturer.

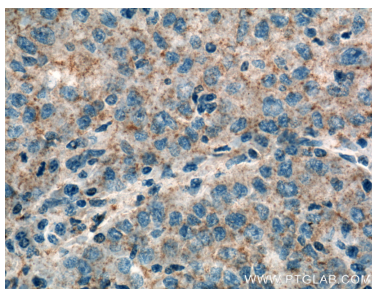
## Selected Validation Data



Various lysates were subjected to SDS PAGE followed by western blot with 15485-1-AP (RAB31 antibody) at dilution of 1:1000 incubated at room temperature for 1.5 hours.



Immunohistochemical analysis of paraffin-embedded human liver cancer tissue slide using 15485-1-AP (RAB31 Antibody) at dilution of 1:200 (under 10x lens). Heat mediated antigen retrieval with Tris-EDTA buffer (pH 9.0).



Immunohistochemical analysis of paraffin-embedded human liver cancer tissue slide using 15485-1-AP (RAB31 Antibody) at dilution of 1:200 (under 40x lens). Heat mediated antigen retrieval with Tris-EDTA buffer (pH 9.0).