

For Research Use Only

# NAT6/FUS2 Polyclonal antibody

Catalog Number: 15476-1-AP

Featured Product

2 Publications



## Basic Information

Catalog Number:

15476-1-AP

Size:

600 µg/ml

Source:

Rabbit

Isotype:

IgG

Immunogen Catalog Number:

AG7780

GenBank Accession Number:

BC004483

GeneID (NCBI):

24142

UNIPROT ID:

Q93015

Full Name:

N-acetyltransferase 6 (GCN5-related)

Calculated MW:

31 kDa

Observed MW:

45 kDa

Purification Method:

Antigen affinity purification

Recommended Dilutions:

WB 1:500-1:2000

IF 1:200-1:800

## Applications

Tested Applications:

IF/ICC, WB, ELISA

Cited Applications:

WB, IF

Species Specificity:

human

Cited Species:

human

Positive Controls:

WB : HeLa cells,

IF : HeLa cells,

## Background Information

The acetyltransferase NAT6 (also known as Fus2) is an enzyme that catalyzes the transfer of acetyl groups from acetyl-CoA to acrylamines and located mainly in the cytoplasm. NAT6 has two isoforms. The molecular weight of NAT6 was detected to be about 45kDa (PMID:32978259).

## Notable Publications

Author	Pubmed ID	Journal	Application
Irena J J Muffels	34805998	Brain Commun	WB
Elsa Wiame	30028079	FEBS J	WB,IF

## Storage

Storage:

Store at -20°C. Stable for one year after shipment.

Storage Buffer:

PBS with 0.02% sodium azide and 50% glycerol pH 7.3.

Aliquoting is unnecessary for -20°C storage

For technical support and original validation data for this product please contact:

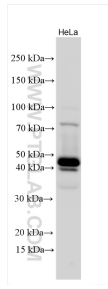
T: 4006900926

E: [Proteintech-CN@ptglab.com](mailto:Proteintech-CN@ptglab.com)

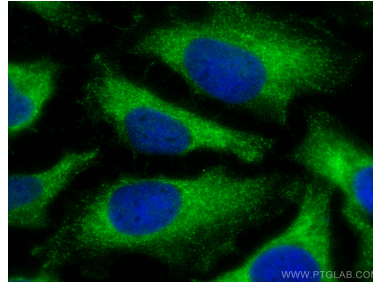
W: [ptgcn.com](http://ptgcn.com)

This product is exclusively available under Proteintech Group brand and is not available to purchase from any other manufacturer.

## Selected Validation Data



Various lysates were subjected to SDS PAGE followed by western blot with 15476-1-AP (NAT6/FUS2 antibody) at dilution of 1:1000 incubated at room temperature for 1.5 hours.



Immunofluorescent analysis of (-20°C Methanol) fixed HeLa cells using NAT6/FUS2 antibody (15476-1-AP) at dilution of 1:400 and CoraLite®488-Conjugated AffiniPure Goat Anti-Rabbit IgG(H+L).