

YIPF4 Polyclonal antibody

Catalog Number: 15473-1-AP

Basic Information

Catalog Number:

15473-1-AP

Size:

500 µg/ml

Source:

Rabbit

Isotype:

IgG

Immunogen Catalog Number:

AG7777

GenBank Accession Number:

BC004875

GeneID (NCBI):

84272

UNIPROT ID:

Q9BSR8

Full Name:

Yip1 domain family, member 4

Calculated MW:

27 kDa

Observed MW:

27 kDa

Purification Method:

Antigen affinity purification

Recommended Dilutions:

WB 1:1000-1:4000

IHC 1:50-1:500

IF/ICC 1:50-1:500

Applications

Tested Applications:

WB, IF/ICC, IHC, ELISA

Species Specificity:

human, mouse, rat

Note-IHC: suggested antigen retrieval with TE buffer pH 9.0; (*) Alternatively, antigen retrieval may be performed with citrate buffer pH 6.0

Positive Controls:

WB : HeLa cells, HEK-293T cells, Jurkat cells, HaCaT cells

IHC : human endometrial cancer tissue,

IF/ICC : HeLa cells,

Background Information

Storage

Storage:

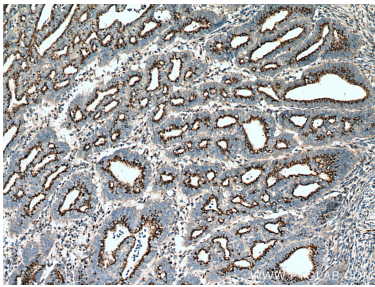
Store at -20°C. Stable for one year after shipment.

Storage Buffer:

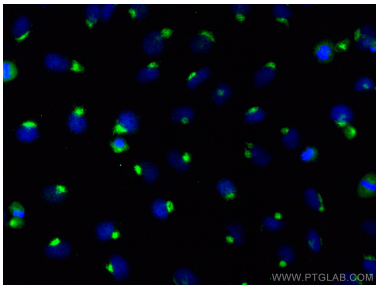
PBS with 0.02% sodium azide and 50% glycerol pH 7.3.

Aliquoting is unnecessary for -20°C storage

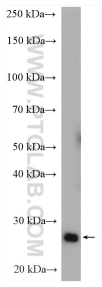
Selected Validation Data



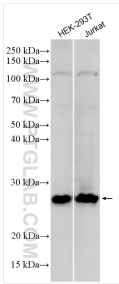
Immunohistochemical analysis of paraffin-embedded human endometrial cancer tissue slide using 15473-1-AP (YIPF4 antibody) at dilution of 1:200 (under 10x lens). Heat mediated antigen retrieval with Tris-EDTA buffer (pH 9.0).



Immunofluorescent analysis of (-20°C Ethanol) fixed HeLa cells using YIPF4 antibody (15473-1-AP) at dilution of 1:200 and CoraLite® 488-Conjugated AffiniPure Goat Anti-Rabbit IgG(H+L) (SA00013-2).



HeLa cells were subjected to SDS PAGE followed by western blot with 15473-1-AP (YIPF4 antibody) at dilution of 1:2000 incubated at room temperature for 1.5 hours.



Various lysates were subjected to SDS PAGE followed by western blot with 15473-1-AP (YIPF4 antibody) at dilution of 1:8000 incubated at room temperature for 1.5 hours.