

For Research Use Only

VPS24 Polyclonal antibody, PBS Only

Catalog Number: 15472-1-PBS

Featured Product



Basic Information

Catalog Number:

15472-1-PBS

Concentration:

1mg/ml

Source:

Rabbit

Isotype:

IgG

Immunogen Catalog Number:

AG7776

GenBank Accession Number:

BC004419

GeneID (NCBI):

51652

UNIPROT ID:

Q9Y3E7

Full Name:

vacuolar protein sorting 24 homolog
(S. cerevisiae)

Calculated MW:

25 kDa

Observed MW:

29 kDa

Purification Method:

Antigen affinity purification

Applications

Tested Applications:

WB, IHC, IF/ICC, IP, ELISA

Species Specificity:

human

Background Information

Storage

Storage:

Store at -80°C.

The product is shipped with ice packs. Upon receipt, store it immediately at -80°C

Storage Buffer:

PBS only, pH7.3

For technical support and original validation data for this product please contact:

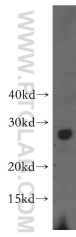
T: 4006900926

E: Proteintech-CN@ptglab.com

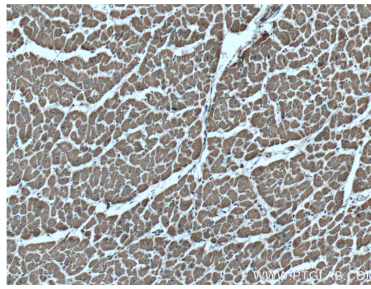
W: ptgcn.com

This product is exclusively available under Proteintech Group brand and is not available to purchase from any other manufacturer.

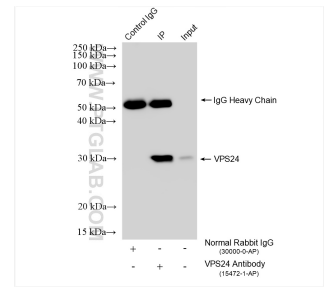
Selected Validation Data



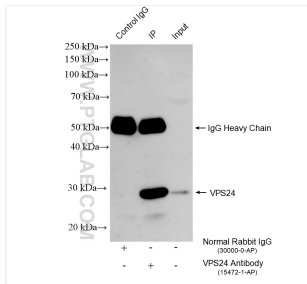
HEK-293 cells were subjected to SDS PAGE followed by western blot with 15472-1-AP (VPS24 antibody) at dilution of 1:300 incubated at room temperature for 1.5 hours. This data was developed using the same antibody clone with 15472-1-PBS in a different storage buffer formulation.



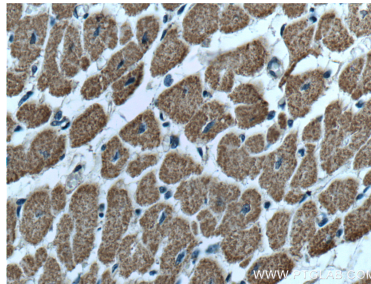
Immunohistochemical analysis of paraffin-embedded human heart tissue slide using 15472-1-AP (VPS24 antibody) at dilution of 1:200 (under 10x lens). This data was developed using the same antibody clone with 15472-1-PBS in a different storage buffer formulation.



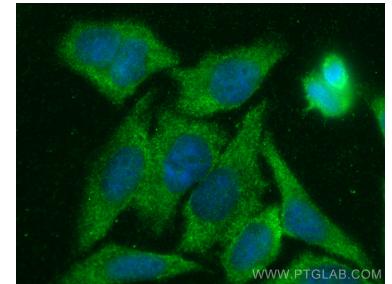
IP result of anti-VPS24 (IP:15472-1-AP, 4ug; Detection:15472-1-AP 1:2000) with HEK-293 cells lysate 1440 ug. This data was developed using the same antibody clone with 15472-1-PBS in a different storage buffer formulation.



N/A This data was developed using the same antibody clone with 15472-1-PBS in a different storage buffer formulation.



Immunohistochemical analysis of paraffin-embedded human heart tissue slide using 15472-1-AP (VPS24 antibody) at dilution of 1:200 (under 40x lens). This data was developed using the same antibody clone with 15472-1-PBS in a different storage buffer formulation.



Immunofluorescent analysis of (-20°C Ethanol) fixed HepG2 cells using VPS24 antibody (15472-1-AP) at dilution of 1:200 and Multi-rAb CoraLite® Plus 488-Goat Anti-Rabbit Recombinant Secondary Antibody (H+L) (RGAR002). This data was developed using the same antibody clone with 15472-1-PBS in a different storage buffer formulation.