

For Research Use Only

# MDH2 Polyclonal antibody

Catalog Number: 15462-1-AP

23 Publications



## Basic Information

Catalog Number:

15462-1-AP

Concentration:

400 ug/ml

Source:

Rabbit

Isotype:

IgG

Immunogen Catalog Number:

AG7750

GenBank Accession Number:

BC001917

GeneID (NCBI):

4191

UNIPROT ID:

P40926

Full Name:

malate dehydrogenase 2, NAD  
(mitochondrial)

Calculated MW:

36 kDa

Observed MW:

33 kDa

Purification Method:

Antigen affinity purification

Recommended Dilutions:

WB 1:1000-1:8000

IP 0.5-4.0 ug for 1.0-3.0 mg of total  
protein lysate

IHC 1:200-1:1000

## Applications

Tested Applications:

WB, IHC, IP, ELISA

Cited Applications:

WB, IP

Species Specificity:

human, mouse, rat

Cited Species:

human, mouse, caenorhabditis elegans

**Note-IHC: suggested antigen retrieval with  
TE buffer pH 9.0; (\*) Alternatively, antigen  
retrieval may be performed with citrate  
buffer pH 6.0**

Positive Controls:

WB : HeLa cells, mouse lung tissue, rat lung tissue,  
HepG2 cells

IP : mouse lung tissue,

IHC : human liver cancer tissue, human lung cancer  
tissue

## Background Information

MDH2 encodes the Krebs cycle enzyme mitochondrial malate dehydrogenase, which catalyzes the reversible oxidation of malate to oxaloacetate and plays a role in the malate-aspartate NADH shuttle. Mutations in MDH2 Cause Developmental and epileptic encephalopathy 51 (PMID: 27989324).

## Notable Publications

Author	Pubmed ID	Journal	Application
Olga Zurita Rendón	30061372	Mol Cell Biol	
Yongyan Sun	30307357	Int J Radiat Biol	WB
Minghao Yuan	36186135	Aging Dis	WB

## Storage

Storage:

Store at -20°C. Stable for one year after shipment.

Storage Buffer:

PBS with 0.02% sodium azide and 50% glycerol pH 7.3.

Aliquoting is unnecessary for -20°C storage

For technical support and original validation data for this product please contact:

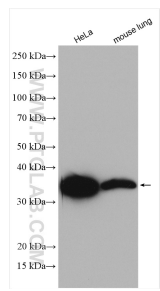
T: 4006900926

E: [Proteintech-CN@ptglab.com](mailto:Proteintech-CN@ptglab.com)

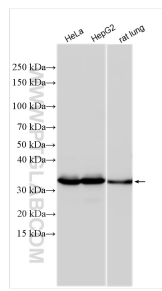
W: [ptgcn.com](http://ptgcn.com)

**This product is exclusively available under Proteintech Group brand and is not available to purchase from any other manufacturer.**

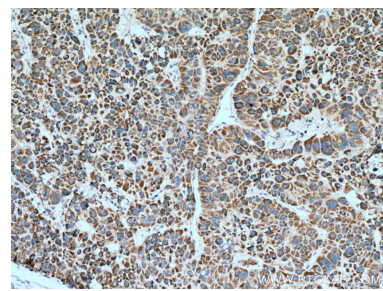
Selected Validation Data



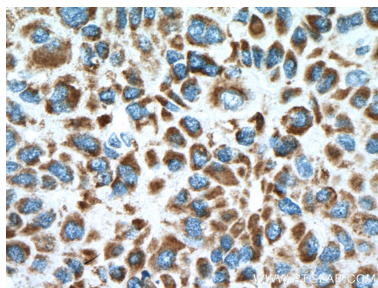
Various lysates were subjected to SDS PAGE followed by western blot with 15462-1-AP (MDH2 antibody) at dilution of 1:1000 incubated at room temperature for 1.5 hours.



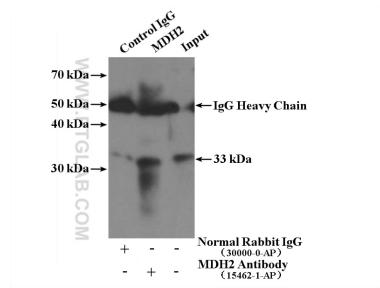
Various lysates were subjected to SDS PAGE followed by western blot with 15462-1-AP (MDH2 antibody) at dilution of 1:4000 incubated at room temperature for 1.5 hours.



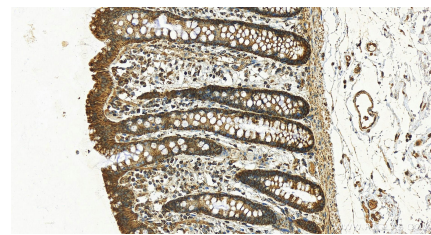
Immunohistochemical analysis of paraffin-embedded human liver cancer tissue slide using 15462-1-AP (MDH2 antibody) at dilution of 1:200 (under 10x lens). Heat mediated antigen retrieval with Tris-EDTA buffer (pH 9.0).



Immunohistochemical analysis of paraffin-embedded human liver cancer tissue slide using 15462-1-AP (MDH2 antibody) at dilution of 1:200 (under 40x lens). Heat mediated antigen retrieval with Tris-EDTA buffer (pH 9.0).



IP result of anti-MDH2 (IP:15462-1-AP, 4ug; Detection:15462-1-AP 1:300) with mouse lung tissue lysate 3600ug.



Immunohistochemical analysis of paraffin-embedded human normal colon slide using 15462-1-AP (MDH2 antibody) at dilution of 1:200 (under 20x lens). Heat mediated antigen retrieval with Tris-EDTA buffer (pH 9.0).