

For Research Use Only

GMDS Polyclonal antibody

Catalog Number: 15442-1-AP **4 Publications**



Basic Information

Catalog Number: 15442-1-AP	GenBank Accession Number: BC000117	Purification Method: Antigen affinity purification
Size: 500 µg/ml	GeneID (NCBI): 2762	Recommended Dilutions: WB 1:500-1:3000 IHC 1:20-1:200 IF 1:50-1:500
Source: Rabbit	UNIPROT ID: O60547	
Isotype: IgG	Full Name: GDP-mannose 4,6-dehydratase	
Immunogen Catalog Number: AG7319	Calculated MW: 42 kDa	
	Observed MW: 40-42 kDa	

Applications

Tested Applications: IF/ICC, IHC, WB, ELISA	Positive Controls: WB : mouse pancreas tissue, HeLa cells, rat spleen tissue, rat pancreas tissue IHC : human lymphoma tissue, IF : HeLa cells,
Cited Applications: IP, WB	
Species Specificity: human, mouse, rat	
Cited Species: human	
Note-IHC: suggested antigen retrieval with TE buffer pH 9.0; (*) Alternatively, antigen retrieval may be performed with citrate buffer pH 6.0	

Background Information

GDP-D-mannose-4,6-dehydratase (GMDS) is the key enzyme in the 'de novo' pathway of GDP-L-fucose biosynthesis (PMID:10462046). The enzyme is also named as GMD and belongs to the GDP-mannose 4,6-dehydratase family. The gene encodes a 42 kDa protein that catalyzes the conversion of GDP-mannose to GDP-4-keto-6-deoxymannose, the first step in the synthesis of GDP-fucose from GDP-mannose, using NADP⁺ as a cofactor.

Notable Publications

Author	Pubmed ID	Journal	Application
Yasuhiko Kizuka	27447047	Cell Chem Biol	WB
Lilli Saarinen	33503764	Mol Cell Proteomics	WB
Lilli Saarinen	30072579	Mol Cell Proteomics	WB

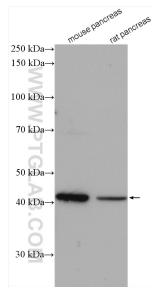
Storage

Storage:
Store at -20°C. Stable for one year after shipment.
Storage Buffer:
PBS with 0.02% sodium azide and 50% glycerol pH 7.3.
Aliquoting is unnecessary for -20°C storage

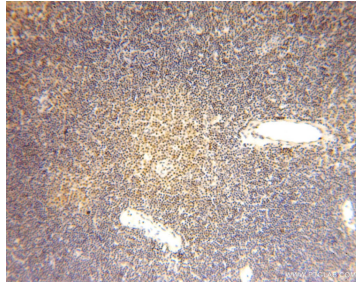
For technical support and original validation data for this product please contact:
T: 4006900926 E: Proteintech-CN@ptglab.com W: ptgcn.com

This product is exclusively available under Proteintech Group brand and is not available to purchase from any other manufacturer.

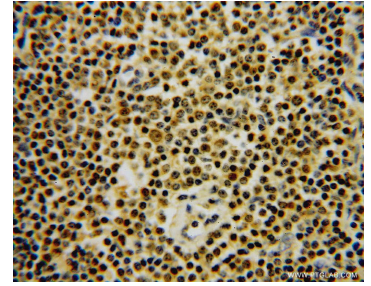
Selected Validation Data



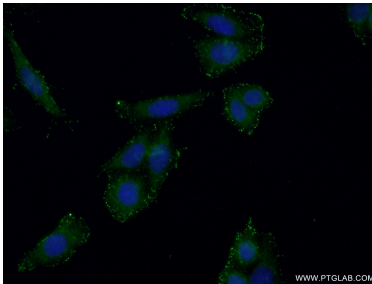
Various lysates were subjected to SDS PAGE followed by western blot with 15442-1-AP (GMDS antibody) at dilution of 1:1500 incubated at room temperature for 1.5 hours.



Immunohistochemical analysis of paraffin-embedded human lymphoma using 15442-1-AP (GMDS antibody) at dilution of 1:50 (under 10x lens).



Immunohistochemical analysis of paraffin-embedded human lymphoma using 15442-1-AP (GMDS antibody) at dilution of 1:50 (under 40x lens).



Immunofluorescent analysis of (-20°C Ethanol) fixed HeLa cells using 15442-1-AP (GMDS antibody) at dilution of 1:50 and Alexa Fluor 488-conjugated AffiniPure Goat Anti-Rabbit IgG(H+L).