

For Research Use Only

EPB41L2 Polyclonal antibody

Catalog Number: 15437-1-AP



Basic Information

Catalog Number:

15437-1-AP

Size:

700 ug/ml

Source:

Rabbit

Isotype:

IgG

Immunogen Catalog Number:

AG3647

GenBank Accession Number:

BC034718

GeneID (NCBI):

2037

UNIPROT ID:

O43491

Full Name:

erythrocyte membrane protein band

4.1-like 2

Calculated MW:

112 kDa

Observed MW:

130-150 kDa

Purification Method:

Antigen affinity purification

Recommended Dilutions:

WB 1:500-1:1000

IP 0.5-4.0 ug for 1.0-3.0 mg of total protein lysate

IHC 1:250-1:1000

IF/ICC 1:50-1:500

Applications

Tested Applications:

WB, IHC, IF/ICC, IP, ELISA

Species Specificity:

human, mouse, rat

Note-IHC: suggested antigen retrieval with TE buffer pH 9.0; (*) Alternatively, antigen retrieval may be performed with citrate buffer pH 6.0

Positive Controls:

WB : HeLa cells, Jurkat cells

IP : HEK-293 cells,

IHC : human ovary tumor tissue,

IF/ICC : A431 cells, HeLa cells

Background Information

EPB41L2, also known as 4.1G, is a member of the protein 4.1 family, which generally serves as adaptors linking transmembrane proteins to the cytoskeleton(PMID: 21482674).

Storage

Storage:

Store at -20°C. Stable for one year after shipment.

Storage Buffer:

PBS with 0.02% sodium azide and 50% glycerol pH 7.3.

Aliquoting is unnecessary for -20°C storage

For technical support and original validation data for this product please contact:

T: 4006900926

E: Proteintech-CN@ptglab.com

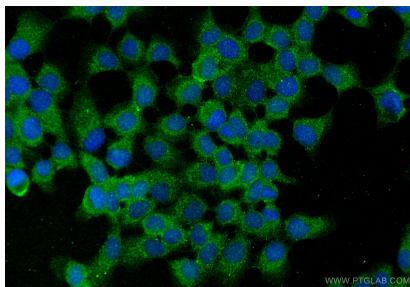
W: ptgcn.com

This product is exclusively available under Proteintech Group brand and is not available to purchase from any other manufacturer.

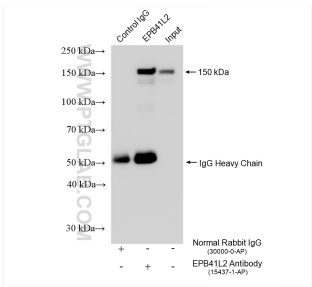
Selected Validation Data



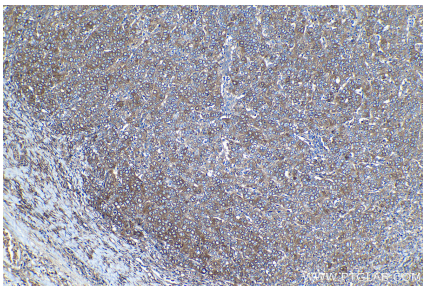
HeLa cells were subjected to SDS PAGE followed by western blot with 15437-1-AP (EPB41L2 antibody) at dilution of 1:800 incubated at room temperature for 1.5 hours.



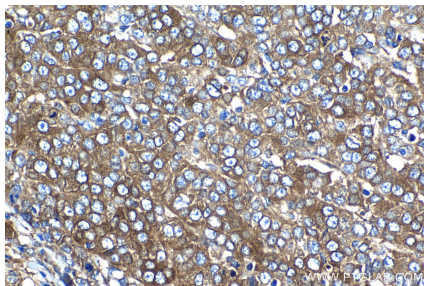
Immunofluorescent analysis of (-20°C Methanol) fixed A431 cells using EPB41L2 antibody (15437-1-AP) at dilution of 1:200 and Multi-rAb CoraLite® Plus 488-Goat Anti-Rabbit Recombinant Secondary Antibody (H+L) (RGAR002).



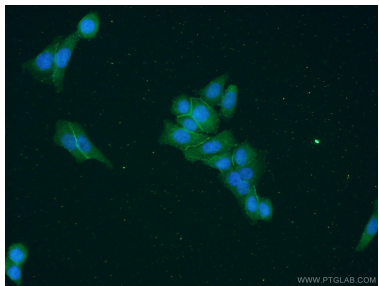
IP result of anti-EPB41L2 (IP:15437-1-AP, 4ug; Detection:15437-1-AP 1:4000) with HEK-293 cells lysate 1610 ug.



Immunohistochemical analysis of paraffin-embedded human ovary tumor tissue slide using 15437-1-AP (EPB41L2 antibody) at dilution of 1:500 (under 10x lens). Heat mediated antigen retrieval with Tris-EDTA buffer (pH 9.0).



Immunohistochemical analysis of paraffin-embedded human ovary tumor tissue slide using 15437-1-AP (EPB41L2 antibody) at dilution of 1:500 (under 40x lens). Heat mediated antigen retrieval with Tris-EDTA buffer (pH 9.0).



Immunofluorescent analysis of HeLa cells using 15437-1-AP (EPB41L2 antibody) at dilution of 1:50 and Alexa Fluor 488-conjugated AffiniPure Goat Anti-Rabbit IgG(H+L).