

For Research Use Only

# SSU72 Polyclonal antibody

Catalog Number: 15434-1-AP



## Basic Information

Catalog Number:

15434-1-AP

Size:

300 µg/ml

Source:

Rabbit

Isotype:

IgG

Immunogen Catalog Number:

AG7699

GenBank Accession Number:

BC008070

GeneID (NCBI):

29101

UNIPROT ID:

Q9NP77

Full Name:

SSU72 RNA polymerase II CTD  
phosphatase homolog (S. cerevisiae)

Calculated MW:

23 kDa

Observed MW:

30 kDa

Purification Method:

Antigen affinity purification

Recommended Dilutions:

WB 1:500-1:3000

IHC 1:50-1:500

## Applications

Tested Applications:

IHC, WB, ELISA

Species Specificity:

human, mouse, rat

**Note-IHC: suggested antigen retrieval with  
TE buffer pH 9.0; (\*) Alternatively, antigen  
retrieval may be performed with citrate  
buffer pH 6.0**

Positive Controls:

WB : HEK-293T cells, HeLa cells

IHC : human liver tissue, human breast cancer tissue,  
human prostate cancer tissue, human kidney tissue

## Background Information

### Storage

Storage:

Store at -20°C. Stable for one year after shipment.

Storage Buffer:

PBS with 0.02% sodium azide and 50% glycerol pH 7.3.

Aliquoting is unnecessary for -20°C storage

For technical support and original validation data for this product please contact:

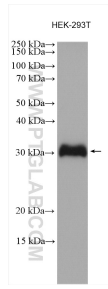
T: 4006900926

E: Proteintech-CN@ptglab.com

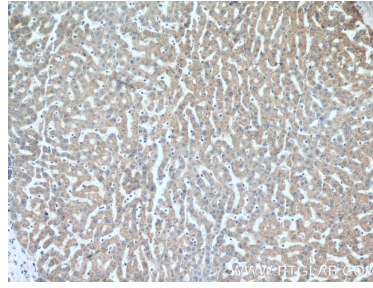
W: ptgcn.com

**This product is exclusively available under Proteintech Group brand and is not available to purchase from any other manufacturer.**

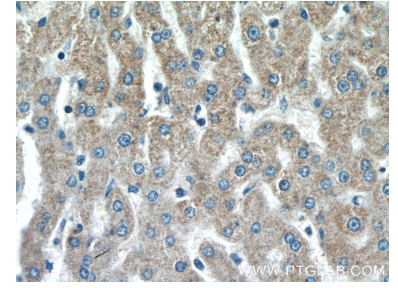
## Selected Validation Data



HEK-293T cells were subjected to SDS PAGE followed by western blot with 15434-1-AP (SSU72 antibody) at dilution of 1:1500 incubated at room temperature for 1.5 hours.



Immunohistochemical analysis of paraffin-embedded human liver tissue slide using 15434-1-AP (SSU72 antibody) at dilution of 1:200 (under 10x lens).



Immunohistochemical analysis of paraffin-embedded human liver tissue slide using 15434-1-AP (SSU72 antibody) at dilution of 1:200 (under 40x lens).