

For Research Use Only

# CD300LG Polyclonal antibody, PBS Only

Catalog Number: 15426-1-PBS



## Basic Information

<b>Catalog Number:</b> 15426-1-PBS	<b>GenBank Accession Number:</b> BC025395	<b>Purification Method:</b> Antigen affinity purification
<b>Source:</b> Rabbit	<b>GeneID (NCBI):</b> 146894	
<b>Isotype:</b> IgG	<b>UNIPROT ID:</b> Q6UXG3	
<b>Immunogen Catalog Number:</b> AG8075	<b>Full Name:</b> CD300 molecule-like family member g	
	<b>Calculated MW:</b> 36 kDa	
	<b>Observed MW:</b> 36 kDa	

## Applications

**Tested Applications:**  
WB, Indirect ELISA

**Species Specificity:**  
human

## Background Information

CD300LG, also known as CLM9 (CMRF35-like molecule 9), is a member of the CD300 protein family. Members of this family are cell surface glycoproteins with a single IgV-like extracellular domain, and are involved in the regulation of immune response. CD300LG is a receptor which may mediate L-selectin-dependent lymphocyte rollings and may play an important role in inflammation.

## Storage

**Storage:**  
Store at -80°C.  
**The product is shipped with ice packs. Upon receipt, store it immediately at -80°C**

**Storage Buffer:**  
PBS only, pH7.3

For technical support and original validation data for this product please contact:

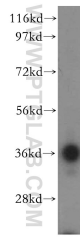
T: 4006900926

E: [Proteintech-CN@ptglab.com](mailto:Proteintech-CN@ptglab.com)

W: [ptgcn.com](http://ptgcn.com)

**This product is exclusively available under Proteintech Group brand and is not available to purchase from any other manufacturer.**

## Selected Validation Data



human kidney tissue were subjected to SDS PAGE followed by western blot with 15426-1-AP (CD300LG antibody) at dilution of 1:500 incubated at room temperature for 1.5 hours. This data was developed using the same antibody clone with 15426-1-PBS in a different storage buffer formulation.