

For Research Use Only

PRPF19 Polyclonal antibody

Catalog Number: 15414-1-AP

5 Publications



Basic Information

Catalog Number:

15414-1-AP

Size:

700 ug/ml

Source:

Rabbit

Isotype:

IgG

Immunogen Catalog Number:

AG7700

GenBank Accession Number:

BC008719

GeneID (NCBI):

27339

UNIPROT ID:

Q9UMS4

Full Name:

PRP19/PSO4 pre-mRNA processing factor 19 homolog (S. cerevisiae)

Calculated MW:

55 kDa

Observed MW:

55 kDa

Purification Method:

Antigen affinity purification

Recommended Dilutions:

WB 1:500-1:2000

IHC 1:50-1:500

Applications

Tested Applications:

WB, IHC, ELISA

Cited Applications:

WB

Species Specificity:

human, mouse, rat

Cited Species:

human, mouse, pig

Note-IHC: suggested antigen retrieval with TE buffer pH 9.0; (*) Alternatively, antigen retrieval may be performed with citrate buffer pH 6.0

Positive Controls:

WB : mouse kidney tissue, HEK-293 cells, HeLa cells, human testis tissue, mouse liver tissue, PC-3 cells, rat kidney tissue

IHC : human stomach tissue,

Background Information

PRPF19 is involved in several processes, including DNA damage checkpoint signaling; cellular protein metabolic process; and mRNA splicing, via spliceosome.

Notable Publications

Author	Pubmed ID	Journal	Application
Pei Fan	32077781	Expert Opin Ther Targets	WB
Guilherme H Gatti da Silva	30506991	J Cell Biochem	WB
Qingwei Zhang	39242014	Arch Biochem Biophys	WB

Storage

Storage:

Store at -20°C. Stable for one year after shipment.

Storage Buffer:

PBS with 0.02% sodium azide and 50% glycerol pH 7.3.

Aliquoting is unnecessary for -20°C storage

For technical support and original validation data for this product please contact:

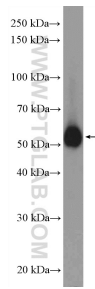
T: 4006900926

E: Proteintech-CN@ptglab.com

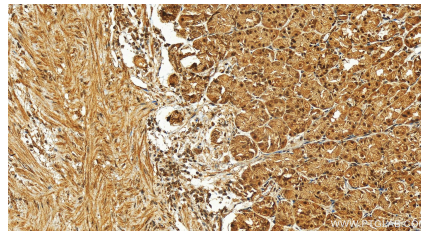
W: ptgcn.com

This product is exclusively available under Proteintech Group brand and is not available to purchase from any other manufacturer.

Selected Validation Data



mouse kidney tissue were subjected to SDS PAGE followed by western blot with 15414-1-AP (PRPF 19 Antibody) at dilution of 1:1000 incubated at room temperature for 1.5 hours.



Immunohistochemical analysis of paraffin-embedded human normal stomach slide using 15414-1-AP (PRPF 19 antibody) at dilution of 1:200 (under 20x lens). Heat mediated antigen retrieval with Tris-EDTA buffer (pH 9.0).