

For Research Use Only

# ATP5E Polyclonal antibody

Catalog Number: 15408-1-AP



## Basic Information

**Catalog Number:**

15408-1-AP

**Size:**

550 µg/ml

**Source:**

Rabbit

**Isotype:**

IgG

**Immunogen Catalog Number:**

AG7672

**GenBank Accession Number:**

BC001690

**GeneID (NCBI):**

514

**UNIPROT ID:**

P56381

**Full Name:**

ATP synthase, H<sup>+</sup> transporting, mitochondrial F1 complex, epsilon subunit

**Calculated MW:**

6 kDa

**Observed MW:**

6 kDa

**Purification Method:**

Antigen affinity purification

**Recommended Dilutions:**

WB 1:1000-1:4000

IF 1:200-1:800

## Applications

**Tested Applications:**

IF/ICC, WB, ELISA

**Species Specificity:**

mouse, human

**Positive Controls:**

**WB** : mouse heart tissue, 37°C incubated mouse heart tissue

**IF** : HeLa cells,

## Background Information

ATP synthase epsilon subunit (ATP5E) is an important subunit of ATP synthase, which is located in the stalk region of the F1 sector. F1-ATPase is the catalytic portion of mitochondrial ATP synthase, which produces ATP from ADP and inorganic phosphate (Pi). ATP5E is widely expressed in tissues. The calculated molecular weight of ATP5E is 6 kDa (PMID: 36625260).

## Storage

**Storage:**

Store at -20°C. Stable for one year after shipment.

**Storage Buffer:**

PBS with 0.02% sodium azide and 50% glycerol pH 7.3.

Aliquoting is unnecessary for -20°C storage

For technical support and original validation data for this product please contact:

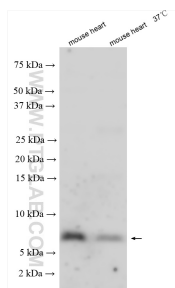
T: 4006900926

E: [Proteintech-CN@ptglab.com](mailto:Proteintech-CN@ptglab.com)

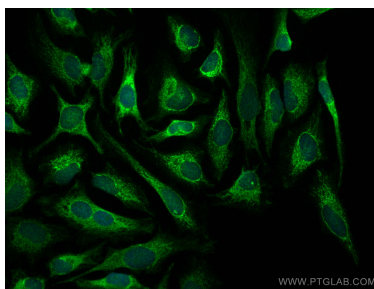
W: [ptgcn.com](http://ptgcn.com)

**This product is exclusively available under Proteintech Group brand and is not available to purchase from any other manufacturer.**

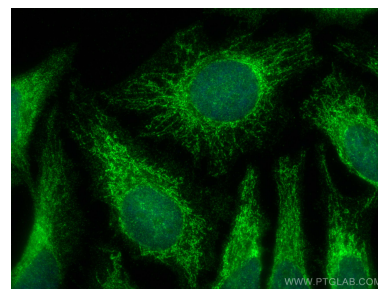
## Selected Validation Data



Boiled and 37°C incubated mouse heart tissue were subjected to SDS PAGE followed by western blot with 15408-1-AP (ATP5E antibody) at dilution of 1:2000 incubated at room temperature for 1.5 hours.



Immunofluorescent analysis of (4% PFA) fixed HeLa cells using ATP5E antibody (15408-1-AP) at dilution of 1:400 and CoraLite®488-Conjugated AffiniPure Goat Anti-Rabbit IgG(H+L).



Immunofluorescent analysis of (4% PFA) fixed HeLa cells using ATP5E antibody (15408-1-AP) at dilution of 1:400 and CoraLite®488-Conjugated AffiniPure Goat Anti-Rabbit IgG(H+L).