

# RBM42 Polyclonal antibody

Catalog Number: 15407-1-AP

## Basic Information

**Catalog Number:**

15407-1-AP

**Concentration:**

550 ug/ml

**Source:**

Rabbit

**Isotype:**

IgG

**Immunogen Catalog Number:**

AG7667

**GenBank Accession Number:**

BC004204

**GeneID (NCBI):**

79171

**UNIPROT ID:**

Q9BTD8

**Full Name:**

RNA binding motif protein 42

**Calculated MW:**

50 kDa

**Observed MW:**

65-70 kDa

**Purification Method:**

Antigen affinity purification

**Recommended Dilutions:**

WB 1:500-1:3000

## Applications

**Tested Applications:**

WB, ELISA

**Species Specificity:**

human, mouse, rat

**Positive Controls:**

WB : HepG2 cells, HEK-293 cells, HeLa cells, human liver tissue, NIH/3T3 cells

## Background Information

RBM42, also known as RNA-binding motif protein 42, is a member of the RNA-binding protein family that plays critical roles in post-transcriptional regulation of gene expression. Emerging studies highlight RBM42's involvement in pre-mRNA splicing through its association with the spliceosome complex, where it contributes to the precise removal of introns and assembly of mature mRNA. Beyond splicing, RBM42 has been implicated in cellular stress responses, cell cycle regulation, and apoptosis. Dysregulation of RBM42 is linked to developmental disorders and cancers; for instance, mutations in RBM42 are associated with neurodevelopmental abnormalities, while its overexpression or loss correlates with tumor progression in certain malignancies.

## Storage

**Storage:**

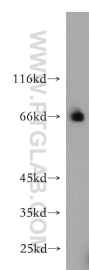
Store at -20°C. Stable for one year after shipment.

**Storage Buffer:**

PBS with 0.02% sodium azide and 50% glycerol pH 7.3.

Aliquoting is unnecessary for -20°C storage

## Selected Validation Data



HepG2 cells were subjected to SDS PAGE followed by western blot with 15407-1-AP (RBM42 antibody) at dilution of 1:500 incubated at room temperature for 1.5 hours.