

For Research Use Only

# YPEL3 Polyclonal antibody

Catalog Number: 15403-1-AP

Featured Product

4 Publications



## Basic Information

**Catalog Number:**

15403-1-AP

**Size:**

427 µg/ml

**Source:**

Rabbit

**Isotype:**

IgG

**Immunogen Catalog Number:**

AG7626

**GenBank Accession Number:**

BC005009

**GeneID (NCBI):**

83719

**UNIPROT ID:**

P61236

**Full Name:**

yippee-like 3 (Drosophila)

**Calculated MW:**

14 kDa

**Observed MW:**

14 kDa

**Purification Method:**

Antigen affinity purification

**Recommended Dilutions:**

WB 1:500-1:2000

IHC 1:50-1:500

## Applications

**Tested Applications:**

IHC, WB, ELISA

**Cited Applications:**

WB, IF, IHC

**Species Specificity:**

human, mouse, rat

**Cited Species:**

human

**Note-IHC: suggested antigen retrieval with TE buffer pH 9.0; (\*) Alternatively, antigen retrieval may be performed with citrate buffer pH 6.0**

**Positive Controls:**

WB : BxPC-3 cells,

IHC : human endometrial cancer tissue,

## Background Information

YPEL3 is part of a five-member family of closely related paralogues: YPEL1-5, which are named in reference to their Drosophila orthologue. Studies showed that YPEL3 is regulated by p53 and its encoding protein induces cellular senescence in human tumor and normal cells, indicating that YPEL3 is a p53-dependent, tumor suppressor gene. (PMID:20388804) 15403-1-AP was raised against full length of YPEL3 protein (1-119aa); it can recognize YPEL1-4.

## Notable Publications

Author	Pubmed ID	Journal	Application
Hyoung-Seok Baek	34675221	Sci Rep	WB,IF
Qing Liu	36911393	Front Genet	IHC
Tuttle Rebecca R	21671470	Int J Cancer	WB

## Storage

**Storage:**

Store at -20°C. Stable for one year after shipment.

**Storage Buffer:**

PBS with 0.02% sodium azide and 50% glycerol pH 7.3.

Aliquoting is unnecessary for -20°C storage

For technical support and original validation data for this product please contact:

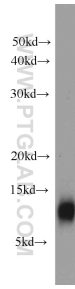
T: 4006900926

E: Proteintech-CN@ptglab.com

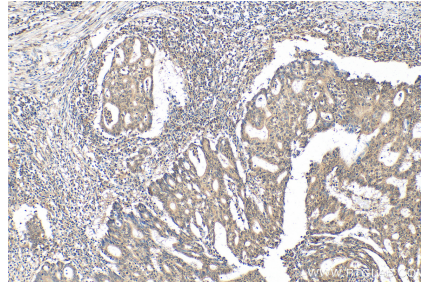
W: ptgcn.com

**This product is exclusively available under Proteintech Group brand and is not available to purchase from any other manufacturer.**

## Selected Validation Data



BxPC-3 cells were subjected to SDS PAGE followed by western blot with 15403-1-AP (YPEL3 antibody) at dilution of 1:1000 incubated at room temperature for 1.5 hours.



Immunohistochemical analysis of paraffin-embedded human endometrial cancer tissue slide using 15403-1-AP (YPEL3 antibody) at dilution of 1:200 (under 10x lens). Heat mediated antigen retrieval with Tris-EDTA buffer (pH 9.0).