

For Research Use Only

USP30 Polyclonal antibody

Catalog Number: 15402-1-AP

2 Publications



Basic Information

Catalog Number:

15402-1-AP

Concentration:

900 ug/ml

Source:

Rabbit

Isotype:

IgG

Immunogen Catalog Number:

AG7620

GenBank Accession Number:

BC004868

GeneID (NCBI):

84749

UNIPROT ID:

Q70CQ3

Full Name:

ubiquitin specific peptidase 30

Calculated MW:

58.5 kDa

Observed MW:

59-67 kDa

Purification Method:

Antigen affinity purification

Recommended Dilutions:

WB 1:500-1:2000

IHC 1:800-1:3200

IF/ICC 1:200-1:800

Applications

Tested Applications:

WB, IHC, IF/ICC, ELISA

Cited Applications:

WB, IF

Species Specificity:

human, mouse, rat

Cited Species:

human, mouse

Note-IHC: suggested antigen retrieval with TE buffer pH 9.0; (*) Alternatively, antigen retrieval may be performed with citrate buffer pH 6.0

Positive Controls:

WB : Daudi cells, HepG2 cells, hTERT-RPE1 cells, mouse kidney tissue, rat kidney tissue

IHC : human colon cancer tissue, human liver cancer tissue

IF/ICC : HepG2 cells, A549 cells, HeLa cells

Background Information

USP30, a mitochondrion-localized deubiquitylase, regulates mitophagy. Mitochondrial damage stimulates parkin to assemble Lys 6, Lys 11 and Lys 63 chains on mitochondria, and that USP30 is a ubiquitin-specific deubiquitylase with a strong preference for cleaving Lys 6- and Lys 11-linked multimers. USP30 can be ubiquitinated by parkin (PARK2) at Lys-235 and Lys-289. USP30 inhibition is potentially beneficial for treating Parkinson disease by promoting mitochondrial clearance and quality control. USP30 was detected 67 kDa by ubiquitination (PMID: 34704599).

Notable Publications

Author	Pubmed ID	Journal	Application
Hideki Ikeda	39843734	Nature	IF
Yang Wu	37300943	Biochem Biophys Res Commun	WB,IF

Storage

Storage:

Store at -20°C. Stable for one year after shipment.

Storage Buffer:

PBS with 0.02% sodium azide and 50% glycerol pH 7.3.

Aliquoting is unnecessary for -20°C storage

For technical support and original validation data for this product please contact:

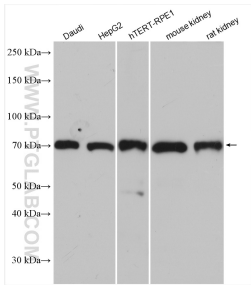
T: 4006900926

E: Proteintech-CN@ptglab.com

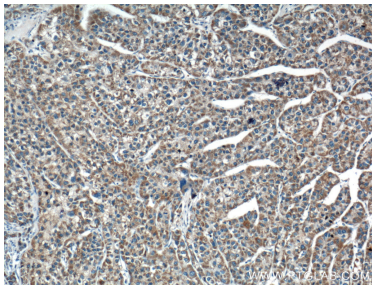
W: ptgcn.com

This product is exclusively available under Proteintech Group brand and is not available to purchase from any other manufacturer.

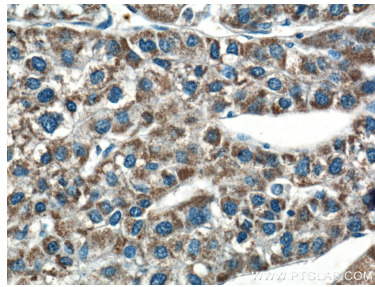
Selected Validation Data



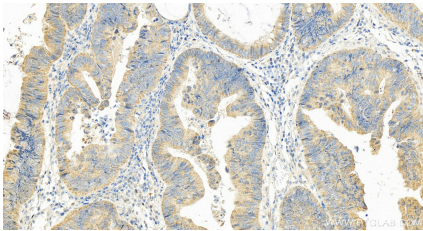
Various lysates were subjected to SDS PAGE followed by western blot with 15402-1-AP (USP30 antibody) at dilution of 1:1000 incubated at room temperature for 1.5 hours.



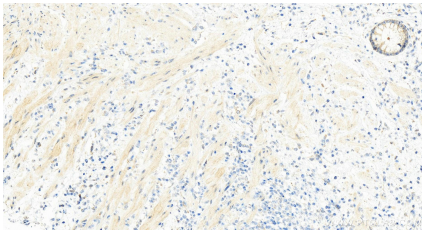
Immunohistochemical analysis of paraffin-embedded human liver cancer tissue slide using 15402-1-AP (USP30 antibody) at dilution of 1:200 (under 10x lens).



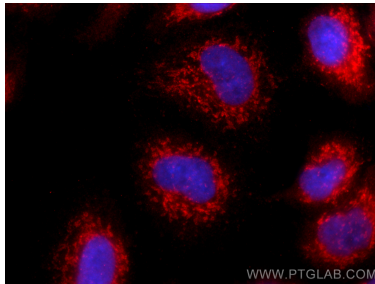
Immunohistochemical analysis of paraffin-embedded human liver cancer tissue slide using 15402-1-AP (USP30 antibody) at dilution of 1:200 (under 40x lens).



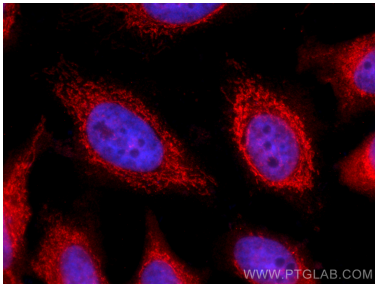
Immunohistochemical analysis of paraffin-embedded human colon cancer tissue slide using 15402-1-AP (USP30 antibody) at dilution of 1:1600 (under 20x lens). Heat mediated antigen retrieval with Tris-EDTA buffer (pH 9.0).



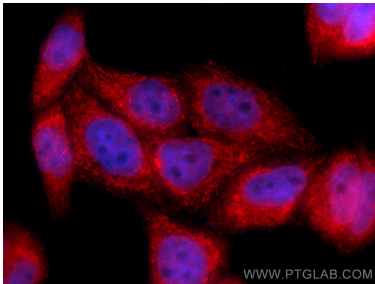
Immunohistochemical analysis of paraffin-embedded human colon cancer tissue slide using 15402-1-AP (USP30 antibody) at dilution of 1:1600 (under 20x lens). Heat mediated antigen retrieval with Tris-EDTA buffer (pH 9.0).



Immunofluorescent analysis of (4% PFA) fixed A549 cells using USP30 antibody (15402-1-AP) at dilution of 1:400 and CoraLite®594-Conjugated Goat Anti-Rabbit IgG(H+L) (SA00013-4).



Immunofluorescent analysis of (4% PFA) fixed HeLa cells using USP30 antibody (15402-1-AP) at dilution of 1:400 and CoraLite®594-Conjugated Goat Anti-Rabbit IgG(H+L) (SA00013-4).



Immunofluorescent analysis of (4% PFA) fixed HepG2 cells using USP30 antibody (15402-1-AP) at dilution of 1:400 and CoraLite®594-Conjugated Goat Anti-Rabbit IgG(H+L) (SA00013-4).