

For Research Use Only

# PRMT6 Polyclonal antibody

Catalog Number: 15395-1-AP

Featured Product

13 Publications



## Basic Information

### Catalog Number:

15395-1-AP

### Size:

550 µg/ml

### Source:

Rabbit

### Isotype:

IgG

### Immunogen Catalog Number:

AG7592

### GenBank Accession Number:

BC002729

### GeneID (NCBI):

55170

### UNIPROT ID:

Q96LA8

### Full Name:

protein arginine methyltransferase 6

### Calculated MW:

42 kDa

### Observed MW:

42 kDa

### Purification Method:

Antigen affinity purification

### Recommended Dilutions:

WB 1:2000-1:10000

IP 0.5-4.0 µg for 1.0-3.0 mg of total protein lysate

IHC 1:50-1:500

IF/ICC 1:300-1:1200

## Applications

### Tested Applications:

WB, IHC, IF/ICC, FC (Intra), IP, ELISA

### Cited Applications:

WB, IHC, IF

### Species Specificity:

human, mouse

### Cited Species:

human, mouse

### Positive Controls:

WB : HEK-293 cells, mouse brain tissue, HeLa cells, MCF-7 cells

IP : HEK-293 cells,

IHC : human prostate cancer tissue, human kidney tissue, human breast cancer tissue, human testis tissue

IF/ICC : MCF-7 cells,

**Note-IHC: suggested antigen retrieval with TE buffer pH 9.0; (\*) Alternatively, antigen retrieval may be performed with citrate buffer pH 6.0**

## Background Information

PRMT6 belongs to the protein arginine methyltransferase (PRMT) family that catalyzes the mono- and dimethylation of arginine residues in a variety of proteins. PRMT6 is a nuclear protein and is predominantly expressed in testis and kidney. Western blot analysis using this antibody detected a major band around 42 kDa in HeLa cells.

## Notable Publications

Author	Pubmed ID	Journal	Application
Wei-Wei Yan	30420520	EMBO Rep	WB
Muyu Xu	29791506	PLoS Pathog	WB
Qi Feng	32535103	Biochem Pharmacol	WB

## Storage

### Storage:

Store at -20°C. Stable for one year after shipment.

### Storage Buffer:

PBS with 0.02% sodium azide and 50% glycerol pH 7.3.

Aliquoting is unnecessary for -20°C storage

For technical support and original validation data for this product please contact:

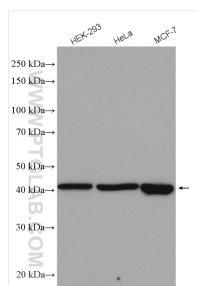
T: 4006900926

E: [Proteintech-CN@ptglab.com](mailto:Proteintech-CN@ptglab.com)

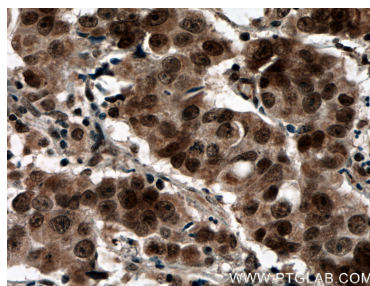
W: [ptgcn.com](http://ptgcn.com)

**This product is exclusively available under Proteintech Group brand and is not available to purchase from any other manufacturer.**

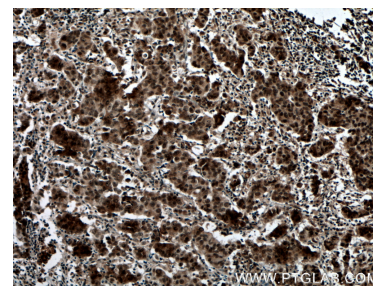
## Selected Validation Data



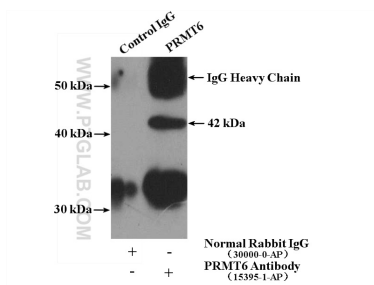
Various lysates were subjected to SDS PAGE followed by western blot with 15395-1-AP (PRMT6 antibody) at dilution of 1:5000 incubated at room temperature for 1.5 hours.



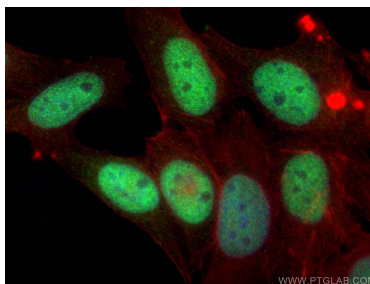
Immunohistochemical analysis of paraffin-embedded human prostate cancer tissue slide using 15395-1-AP (PRMT6 antibody) at dilution of 1:200 (under 40x lens. Heat mediated antigen retrieval with Tris-EDTA buffer (pH 9.0).



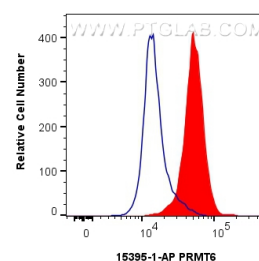
Immunohistochemical analysis of paraffin-embedded human prostate cancer tissue slide using 15395-1-AP (PRMT6 antibody) at dilution of 1:200 (under 10x lens. Heat mediated antigen retrieval with Tris-EDTA buffer (pH 9.0).



IP result of anti-PRMT6 (IP:15395-1-AP, 4ug; Detection:15395-1-AP 1:1500) with HEK-293 cells lysate 2400ug.



Immunofluorescent analysis of (4% PFA) fixed MCF-7 cells using PRMT6 antibody (15395-1-AP) at dilution of 1:600 and Coralite@488-Conjugated Goat Anti-Rabbit IgG(H+L) (SA00013-2), CL594-phalloidin (red).



1x10<sup>6</sup> MCF-7 cells were intracellularly stained with 0.4 ug PRMT6 Polyclonal antibody (15395-1-AP) and Coralite@488-Conjugated Goat Anti-Rabbit IgG(H+L) (SA00013-2)(red), or 0.4 ug Rabbit IgG control Rabbit PolyAb (30000-0-AP) (blue). Cells were fixed and permeabilized with Transcription Factor Staining Buffer Kit (PF00011).