

For Research Use Only

BRCC3 Polyclonal antibody

Catalog Number: 15391-1-AP

Featured Product

6 Publications



Basic Information

Catalog Number:

15391-1-AP

Source:

Rabbit

Isotype:

IgG

Immunogen Catalog Number:

AG7584

GenBank Accession Number:

BC002999

GeneID (NCBI):

79184

UNIPROT ID:

P46736

Full Name:

BRCA1/BRCA2-containing complex, subunit 3

Calculated MW:

36 kDa

Observed MW:

35 kDa

Purification Method:

Antigen affinity purification

Recommended Dilutions:

WB: 1:1000-1:4000

IHC: 1:50-1:500

Applications

Tested Applications:

WB, IHC, ELISA

Cited Applications:

WB, IHC, IF, CoIP

Species Specificity:

human, mouse, rat

Cited Species:

human, mouse, pig

Note-IHC: suggested antigen retrieval with TE buffer pH 9.0; (*) Alternatively, antigen retrieval may be performed with citrate buffer pH 6.0

Positive Controls:

WB : HeLa cells, MCF-7 cells, MDA-MB-468 cells, NIH/3T3 cells, PC-3 cells

IHC : human nasopharyngeal carcinoma tissue,

Background Information

BRCA1-BRCA2-containing complex subunit 3 (BRCC3), a Lys-63-specific deubiquitinase, is a member of the JAMM/MPN family of zinc metalloproteases. BRCC3 have been shown to promote the inflammasome activation by deubiquitinating NOD-like receptor containing pyrin domain 3 (NLRP3). BRCC3 is associated with G2/M arrest in breast cancer cells and DNA damage. The expression of BRCC3 is associated with increased cell proliferation. (PMID: 23246432, PMID: 30272359)

Notable Publications

Author	Pubmed ID	Journal	Application
Nitchakarn Kaokhum	36182100	Mol Cell Proteomics	WB
Xinming Pan	40013521	Autophagy	WB
Hao Wang	39642564	Int Immunopharmacol	WB,IHC,CoIP

Storage

Storage:

Store at -20°C. Stable for one year after shipment.

Storage Buffer:

PBS with 0.02% sodium azide and 50% glycerol, pH7.3

Aliquoting is unnecessary for -20°C storage

For technical support and original validation data for this product please contact:

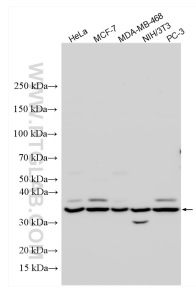
T: 4006900926

E: Proteintech-CN@ptglab.com

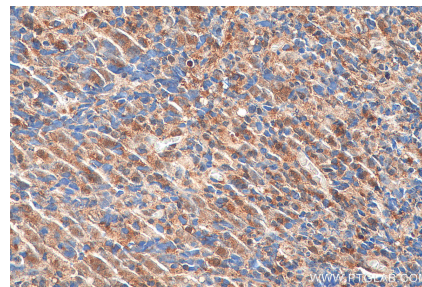
W: ptgcn.com

This product is exclusively available under Proteintech Group brand and is not available to purchase from any other manufacturer.

Selected Validation Data



Various lysates were subjected to SDS PAGE followed by western blot with 15391-1-AP (BRC3 antibody) at dilution of 1:2000 incubated at room temperature for 1.5 hours.



Immunohistochemical analysis of paraffin-embedded human nasopharyngeal carcinoma tissue slide using 15391-1-AP (BRC3 antibody) at dilution of 1:200 (under 40x lens). Heat mediated antigen retrieval with Tris-EDTA buffer (pH 9.0).