

For Research Use Only

# CEL Polyclonal antibody

Catalog Number: 15384-1-AP

Featured Product

5 Publications



## Basic Information

### Catalog Number:

15384-1-AP

### Size:

500 µg/ml

### Source:

Rabbit

### Isotype:

IgG

### Immunogen Catalog Number:

AG5262

### GenBank Accession Number:

BC042510

### GeneID (NCBI):

1056

### UNIPROT ID:

P19835

### Full Name:

carboxyl ester lipase (bile salt-stimulated lipase)

### Calculated MW:

79 kDa

### Observed MW:

67 kDa

### Purification Method:

Antigen affinity purification

### Recommended Dilutions:

WB 1:500-1:3000

IHC 1:50-1:500

IF-P 1:50-1:500

IF/ICC 1:10-1:100

## Applications

### Tested Applications:

WB, IHC, IF/ICC, IF-P, ELISA

### Cited Applications:

WB, IHC, IF

### Species Specificity:

human, mouse, rat

### Cited Species:

human, mouse

### Positive Controls:

**WB** : human liver tissue, HeLa cells, mouse heart tissue, mouse liver tissue

**IHC** : human pancreas cancer tissue,

**IF-P** : human pancreas cancer tissue,

**IF/ICC** : HeLa cells,

**Note-IHC: suggested antigen retrieval with TE buffer pH 9.0; (\*) Alternatively, antigen retrieval may be performed with citrate buffer pH 6.0**

## Background Information

Bile salt-activated lipase, previously named cholesterol esterase or bile salt-stimulated (or dependent) lipase, is a 74 kDa lipolytic enzyme capable of hydrolyzing cholesteryl esters, tri-, di-, and mono-acylglycerols, phospholipids, lysophospholipids, and ceramide (PMID:12454261). The same enzyme is present as a major protein in milk and as a minor constituent in liver, activated macrophages, and endothelial cells (PMID:11733511). Defects in CEL are a cause of maturity-onset diabetes of the young type 8 with exocrine dysfunction (MODY8) (PMID:16369531). The full length protein has 11 glycosylation sites. It has 2 isoforms produced by alternative splicing.

## Notable Publications

Author	Pubmed ID	Journal	Application
Minghe Zhou	34643375	ACS Biomater Sci Eng	WB, IF
Matthew J Kolar	27509211	Biochemistry	WB
Xiao-Tong Mao	35398595	Cell Mol Gastroenterol Hepatol	WB, IHC

## Storage

### Storage:

Store at -20°C. Stable for one year after shipment.

### Storage Buffer:

PBS with 0.02% sodium azide and 50% glycerol pH 7.3.

Aliquoting is unnecessary for -20°C storage

For technical support and original validation data for this product please contact:

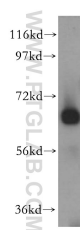
T: 4006900926

E: [Proteintech-CN@ptglab.com](mailto:Proteintech-CN@ptglab.com)

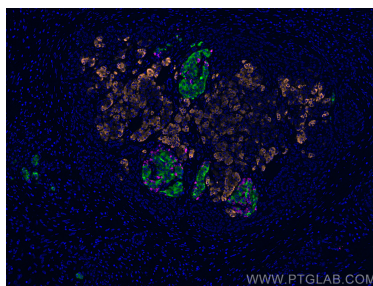
W: [ptgcn.com](http://ptgcn.com)

**This product is exclusively available under Proteintech Group brand and is not available to purchase from any other manufacturer.**

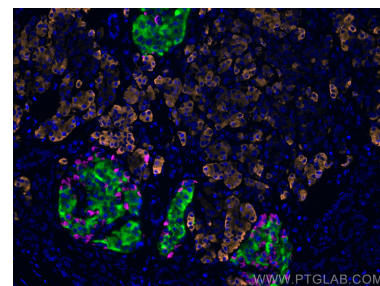
## Selected Validation Data



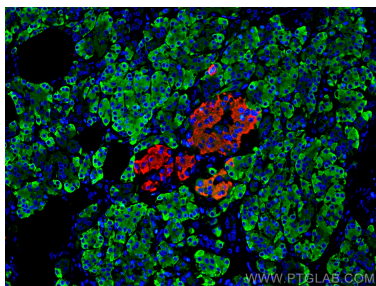
human liver tissue were subjected to SDS PAGE followed by western blot with 15384-1-AP (CEL antibody) at dilution of 1:500 incubated at room temperature for 1.5 hours.



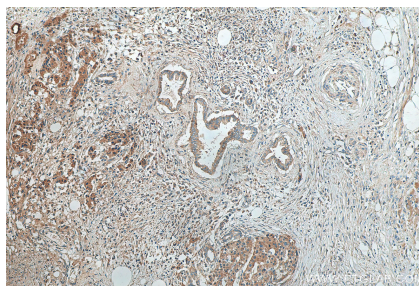
Immunofluorescent analysis of (4% PFA) fixed human pancreas cancer tissue using CEL antibody (15384-1-AP) at dilution of 1:200 and TRITC-Goat anti-Rabbit IgG, CoraLite® Plus 647 Glucagon antibody (CL647-15954, Magenta), CoraLite®488 INS antibody (CL488-66198, Clone: 4B6A7, green).



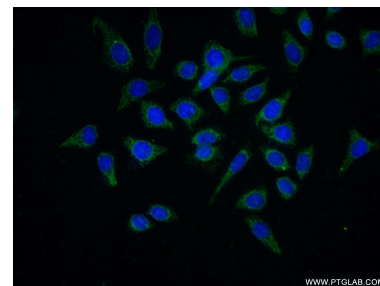
Immunofluorescent analysis of (4% PFA) fixed human pancreas cancer tissue using CEL antibody (15384-1-AP) at dilution of 1:200 and TRITC-Goat anti-Rabbit IgG, CoraLite® Plus 647 Glucagon antibody (CL647-15954, Magenta), CoraLite®488 INS antibody (CL488-66198, Clone: 4B6A7, green).



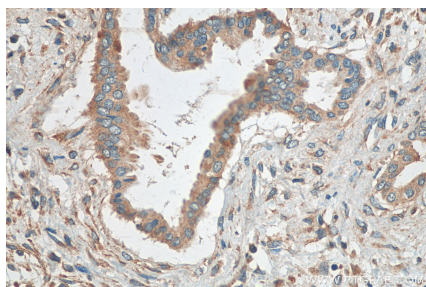
Immunofluorescent analysis of (4% PFA) fixed human pancreas cancer tissue using CEL antibody (15384-1-AP) at dilution of 1:200 and CoraLite®488-Conjugated Goat Anti-Rabbit IgG(H+L), INS antibody (66198-1-Ig, Clone: 4B6A7, red).



Immunohistochemical analysis of paraffin-embedded human pancreas cancer tissue slide using 15384-1-AP (CEL antibody) at dilution of 1:200 (under 10x lens). Heat mediated antigen retrieval with Tris-EDTA buffer (pH 9.0).



Immunofluorescent analysis of (-20°C Ethanol) fixed HeLa cells using 15384-1-AP (CEL antibody) at dilution of 1:25 and Alexa Fluor 488-conjugated Goat Anti-Rabbit IgG(H+L).



Immunohistochemical analysis of paraffin-embedded human pancreas cancer tissue slide using 15384-1-AP (CEL antibody) at dilution of 1:200 (under 40x lens). Heat mediated antigen retrieval with Tris-EDTA buffer (pH 9.0).