

CES2 Polyclonal antibody

Catalog Number: 15378-1-AP

Featured Product

3 Publications

Basic Information

Catalog Number:

15378-1-AP

Size:

500 µg/ml

Source:

Rabbit

Isotype:

IgG

Immunogen Catalog Number:

AG2218

GenBank Accession Number:

BC032095

GeneID (NCBI):

8824

UNIPROT ID:

O00748

Full Name:

carboxylesterase 2 (intestine, liver)

Calculated MW:

62 kDa

Observed MW:

60-70 kDa

Purification Method:

Antigen affinity purification

Recommended Dilutions:

WB 1:500-1:2000

IHC 1:50-1:500

Applications

Tested Applications:

WB, IHC, ELISA

Cited Applications:

WB, IHC

Species Specificity:

human, mouse

Cited Species:

human

Note-IHC: suggested antigen retrieval with TE buffer pH 9.0; (*) Alternatively, antigen retrieval may be performed with citrate buffer pH 6.0

Positive Controls:

WB : BxPC-3 cells, human liver tissue, HuH-7 cells

IHC : mouse small intestine tissue,

Background Information

CES2 (Carboxylesterase 2) is also named as ICE and belongs to the type-B carboxylesterase/lipase family. Carboxylesterases (CESs) hydrolyze ester groups of drugs and toxins. CES2 specifically catalyzes the hydrolysis of the benzoyl group of cocaine and the acetyl groups of 4-methylumbelliferyl acetate, heroin, and 6-monoacetylmorphine. CES2 differs from another liver carboxylesterase, CES1 (114835), in drug ester substrate specificity. This protein has 2 isoforms produced by alternative splicing

Notable Publications

Author	Pubmed ID	Journal	Application
Xijuan Chen	36113774	Mol Metab	WB, IHC
Wenjing Luo	28128444	Br J Pharmacol	WB
Sato Yuichiro Y	22504157	Drug Metab Dispos	WB

Storage

Storage:

Store at -20°C. Stable for one year after shipment.

Storage Buffer:

PBS with 0.02% sodium azide and 50% glycerol pH 7.3.

Aliquoting is unnecessary for -20°C storage

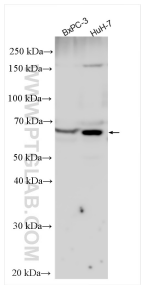
For technical support and original validation data for this product please contact:

T: 4006900926

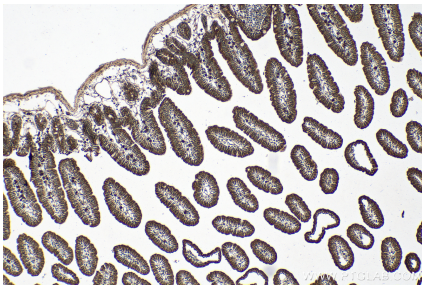
E: Proteintech-CN@ptglab.comW: ptgcn.com

This product is exclusively available under Proteintech Group brand and is not available to purchase from any other manufacturer.

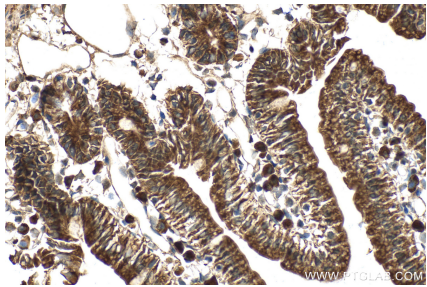
Selected Validation Data



Various lysates were subjected to SDS PAGE followed by western blot with 15378-1-AP (CES2 antibody) at dilution of 1:1000 incubated at room temperature for 1.5 hours.



Immunohistochemical analysis of paraffin-embedded mouse small intestine tissue slide using 15378-1-AP (CES2 antibody) at dilution of 1:200 (under 10x lens). Heat mediated antigen retrieval with Tris-EDTA buffer (pH 9.0).



Immunohistochemical analysis of paraffin-embedded mouse small intestine tissue slide using 15378-1-AP (CES2 antibody) at dilution of 1:200 (under 40x lens). Heat mediated antigen retrieval with Tris-EDTA buffer (pH 9.0).