

For Research Use Only

TRIB2 Polyclonal antibody

Catalog Number: 15359-1-AP

Featured Product

2 Publications



Basic Information

Catalog Number:

15359-1-AP

Size:

133 µg/ml

Source:

Rabbit

Isotype:

IgG

Immunogen Catalog Number:

AG7605

GenBank Accession Number:

BC002637

GeneID (NCBI):

28951

UNIPROT ID:

Q92519

Full Name:

tribbles homolog 2 (Drosophila)

Calculated MW:

39 kDa

Observed MW:

46 kDa

Purification Method:

Antigen affinity purification

Recommended Dilutions:

WB 1:500-1:2000

IHC 1:20-1:200

Applications

Tested Applications:

IHC, WB, ELISA

Cited Applications:

WB, IF

Species Specificity:

human, mouse, rat

Cited Species:

human, mouse

Note-IHC: suggested antigen retrieval with TE buffer pH 9.0; (*) Alternatively, antigen retrieval may be performed with citrate buffer pH 6.0

Positive Controls:

WB: HeLa cells, Jurkat cells, mouse thymus tissue, K-562 cells

IHC: human placenta tissue, human brain tissue, human heart tissue, human kidney tissue, human liver tissue, human lung tissue, human ovary tissue, human skin tissue, human spleen tissue, human testis tissue

Background Information

TRIB2, also named as TRB2, belongs to the protein kinase superfamily, CAMK Ser/Thr protein kinase family and Tribbles subfamily. TRIB2 interacts with MAPK kinases and regulates activation of MAP kinases. It does not display kinase activity. Antibodies against TRIB2 are present in sera from patients with autoimmune uveitis (uniprot). TRIB2 is enriched in hypocretin neurons. Sera from narcolepsy patients with cataplexy had higher Trib2-specific antibody titers compared with either normal controls or patients with idiopathic hypersomnia, multiple sclerosis, or other inflammatory neurological disorders.

Notable Publications

Author	Pubmed ID	Journal	Application
Eun Kyoung Do	29170476	Exp Mol Med	WB,IF
Wan Yun Ho	37920668	iScience	WB,IF

Storage

Storage:

Store at -20°C. Stable for one year after shipment.

Storage Buffer:

PBS with 0.02% sodium azide and 50% glycerol pH 7.3.

Aliquoting is unnecessary for -20°C storage

For technical support and original validation data for this product please contact:

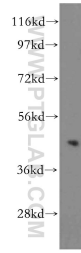
T: 4006900926

E: Proteintech-CN@ptglab.com

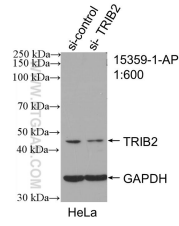
W: ptgcn.com

This product is exclusively available under Proteintech Group brand and is not available to purchase from any other manufacturer.

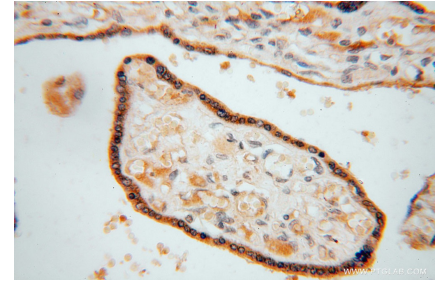
Selected Validation Data



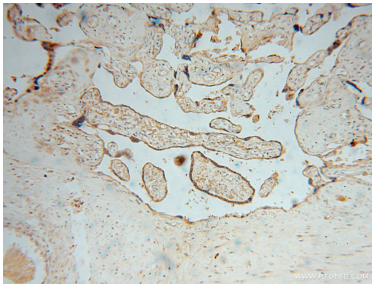
HeLa cells were subjected to SDS PAGE followed by western blot with 15359-1-AP (TRIB2 antibody) at dilution of 1:500 incubated at room temperature for 1.5 hours.



WB result of TRIB2 antibody (15359-1-AP; 1:600; incubated at room temperature for 1.5 hours) with sh-Control and sh-TRIB2 transfected HeLa cells.



Immunohistochemical analysis of paraffin-embedded human placenta using 15359-1-AP (TRIB2 antibody) at dilution of 1:50 (under 40x lens).



Immunohistochemical analysis of paraffin-embedded human placenta using 15359-1-AP (TRIB2 antibody) at dilution of 1:50 (under 10x lens).