

For Research Use Only

Cyclophilin E Polyclonal antibody

Catalog Number: 15357-1-AP



Basic Information

Catalog Number:

15357-1-AP

Size:

450 µg/ml

Source:

Rabbit

Isotype:

IgG

Immunogen Catalog Number:

AG7603

GenBank Accession Number:

BC004898

GeneID (NCBI):

10450

UNIPROT ID:

Q9UNP9

Full Name:

peptidylprolyl isomerase E
(cyclophilin E)

Calculated MW:

33 kDa

Observed MW:

33 kDa

Purification Method:

Antigen affinity purification

Recommended Dilutions:

WB 1:500-1:3000

Applications

Tested Applications:

WB, ELISA

Species Specificity:

human, mouse, rat

Positive Controls:

WB : HEK-293 cells, HeLa cells

Background Information

Storage

Storage:

Store at -20°C. Stable for one year after shipment.

Storage Buffer:

PBS with 0.02% sodium azide and 50% glycerol pH 7.3.

Aliquoting is unnecessary for -20°C storage

For technical support and original validation data for this product please contact:

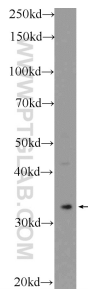
T: 4006900926

E: Proteintech-CN@ptglab.com

W: ptgcn.com

This product is exclusively available under Proteintech Group brand and is not available to purchase from any other manufacturer.

Selected Validation Data



HEK-293 cells were subjected to SDS PAGE followed by western blot with 15357-1-AP (Cyclophilin E antibody at dilution of 1:1500 incubated at room temperature for 1.5 hours.