

For Research Use Only

# RLBP1 Polyclonal antibody

Catalog Number: 15356-1-AP

16 Publications



## Basic Information

### Catalog Number:

15356-1-AP

### Size:

300 ug/ml

### Source:

Rabbit

### Isotype:

IgG

### Immunogen Catalog Number:

AG7602

### GenBank Accession Number:

BC004199

### GeneID (NCBI):

6017

### UNIPROT ID:

P12271

### Full Name:

retinaldehyde binding protein 1

### Calculated MW:

36 kDa

### Observed MW:

36 kDa

### Purification Method:

Antigen affinity purification

### Recommended Dilutions:

WB 1:500-1:2000

IHC 1:50-1:500

IF-P 1:200-1:800

IF/ICC 1:50-1:500

## Applications

### Tested Applications:

WB, IHC, IF/ICC, IF-P, ELISA

### Cited Applications:

WB, IHC, IF

### Species Specificity:

human, mouse, rat

### Cited Species:

human, mouse, rat, zebrafish

**Note-IHC: suggested antigen retrieval with TE buffer pH 9.0; (\*) Alternatively, antigen retrieval may be performed with citrate buffer pH 6.0**

### Positive Controls:

**WB** : mouse eye tissue, HepG2 cells, mouse retina tissue, rat eye tissue

**IHC** : mouse eye tissue, human eye tissue

**IF-P** : mouse eye tissue, Retinal organoids

**IF/ICC** : HeLa cells, Y79 cells

## Background Information

RLBP1 (Retinaldehyde-binding protein 1) is also named as cellular retinaldehyde-binding protein (CRALBP). CRALBP, a 36-kDa aqueous soluble carrier, is expressed in abundance by both retinal pigment epithelial (RPE) and Muller cells of retina and is important for rod- and cone-driven vision (PMID: 32188692). Retinal RLBP1 expression was decreased in diabetes, and its overexpression in Müller glia mitigated DR-associated neurovascular degeneration (PMID: 33674409).

## Notable Publications

Author	Pubmed ID	Journal	Application
Xiaoman Zhu	36096985	Cell Death Dis	WB,IF
Ting Zhang	36064625	Stem Cell Res Ther	IF
Haibin Tian	36185374	iScience	IF

## Storage

### Storage:

Store at -20°C. Stable for one year after shipment.

### Storage Buffer:

PBS with 0.02% sodium azide and 50% glycerol pH 7.3.

Aliquoting is unnecessary for -20°C storage

For technical support and original validation data for this product please contact:

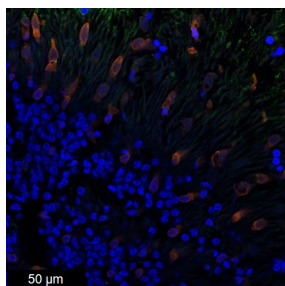
T: 4006900926

E: [Proteintech-CN@ptglab.com](mailto:Proteintech-CN@ptglab.com)

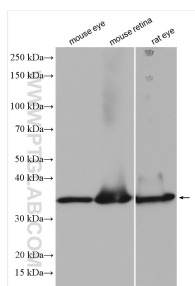
W: [ptgcn.com](http://ptgcn.com)

**This product is exclusively available under Proteintech Group brand and is not available to purchase from any other manufacturer.**

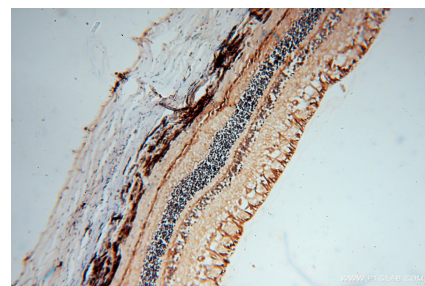
## Selected Validation Data



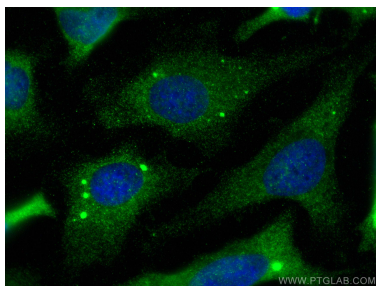
Retinal organoids (day 250) generated from human induced pluripotent stem cells (iPSCs) and fixed with 4% PFA. Stained for Tubulin beta 3/TUJ1 using 66375-1-Ig at 1:500 dilution (green) and CRALBP using 15356-1-AP at 1:400 (red). Nuclear stain DAPI (blue). Scale bar = 50 μm. Data generated by Alessandro Bellapianta at Johannes Kepler Universitat, Austria.



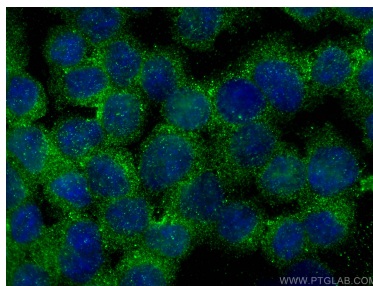
Various lysates were subjected to SDS PAGE followed by western blot with 15356-1-AP (RLBP1 antibody) at dilution of 1:1000 incubated at room temperature for 1.5 hours.



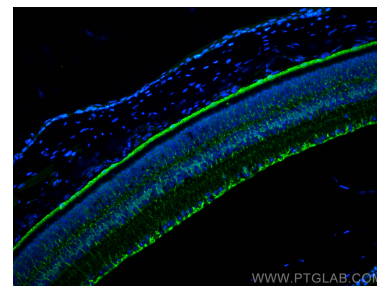
Immunohistochemical analysis of paraffin-embedded human eye using 15356-1-AP (RLBP1 antibody) at dilution of 1:50 (under 10x lens).



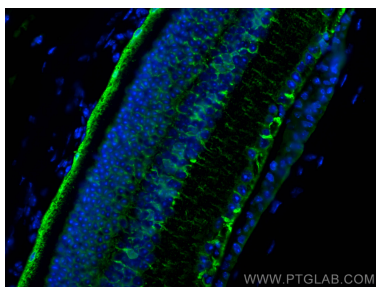
Immunofluorescent analysis of (-20°C Methanol) fixed HeLa cells using RLBP1 antibody (15356-1-AP) at dilution of 1:200 and CoraLite®488-Conjugated Goat Anti-Rabbit IgG(H+L).



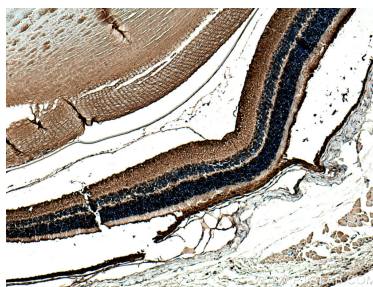
Immunofluorescent analysis of (4% PFA) fixed Y79 cells using RLBP1 antibody (15356-1-AP) at dilution of 1:200 and CoraLite®488-Conjugated Goat Anti-Rabbit IgG(H+L).



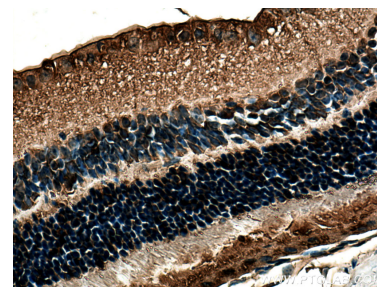
Immunofluorescent analysis of (4% PFA) fixed paraffin-embedded mouse eye tissue using RLBP1 antibody (15356-1-AP) at dilution of 1:400 and CoraLite®488-Conjugated Goat Anti-Rabbit IgG(H+L) (SA00013-2). Heat mediated antigen retrieval with Tris-EDTA buffer (pH 9.0).



Immunofluorescent analysis of (4% PFA) fixed paraffin-embedded mouse eye tissue using RLBP1 antibody (15356-1-AP) at dilution of 1:400 and CoraLite®488-Conjugated Goat Anti-Rabbit IgG(H+L) (SA00013-2). Heat mediated antigen retrieval with Tris-EDTA buffer (pH 9.0).



Immunohistochemical analysis of paraffin-embedded mouse eye tissue slide using 15356-1-AP (RLBP1 antibody) at dilution of 1:200 (under 10x lens). Heat mediated antigen retrieval with Tris-EDTA buffer (pH 9.0).



Immunohistochemical analysis of paraffin-embedded mouse eye tissue slide using 15356-1-AP (RLBP1 antibody) at dilution of 1:200 (under 40x lens). Heat mediated antigen retrieval with Tris-EDTA buffer (pH 9.0).