

For Research Use Only

RPS27 Polyclonal antibody

Catalog Number: 15355-1-AP

Featured Product

6 Publications



Basic Information

Catalog Number:

15355-1-AP

Size:

487 µg/ml

Source:

Rabbit

Isotype:

IgG

Immunogen Catalog Number:

AG7601

GenBank Accession Number:

BC002658

GeneID (NCBI):

6232

UNIPROT ID:

P42677

Full Name:

ribosomal protein S27

Calculated MW:

9 kDa

Observed MW:

9 kDa

Purification Method:

Antigen affinity purification

Recommended Dilutions:

WB 1:1000-1:6000

IP 0.5-4.0 µg for 1.0-3.0 mg of total protein lysate

IHC 1:20-1:200

IF/ICC 1:200-1:800

Applications

Tested Applications:

WB, IHC, IF/ICC, IP, ELISA

Cited Applications:

WB

Species Specificity:

human

Cited Species:

human, mouse

Note-IHC: suggested antigen retrieval with TE buffer pH 9.0; (*) Alternatively, antigen retrieval may be performed with citrate buffer pH 6.0

Positive Controls:

WB : HepG2 cells, SGC-7901 cells, Jurkat cells

IP : SGC-7901 cells,

IHC : human endometrial cancer tissue,

IF/ICC : HeLa cells,

Background Information

Notable Publications

Author	Pubmed ID	Journal	Application
Hyun Ju Lee	29129916	Nat Commun	WB
Isabel Saez	31365120	FEBS Lett	WB
Dameng Li	38365771	Cancer Metab	WB

Storage

Storage:

Store at -20°C. Stable for one year after shipment.

Storage Buffer:

PBS with 0.02% sodium azide and 50% glycerol pH 7.3.

Aliquoting is unnecessary for -20°C storage

For technical support and original validation data for this product please contact:

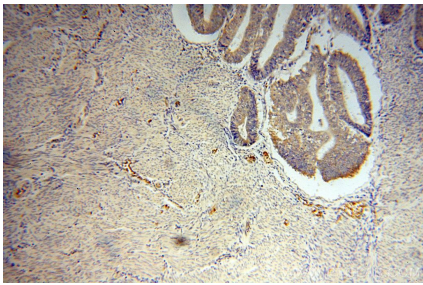
T: 4006900926

E: Proteintech-CN@ptglab.com

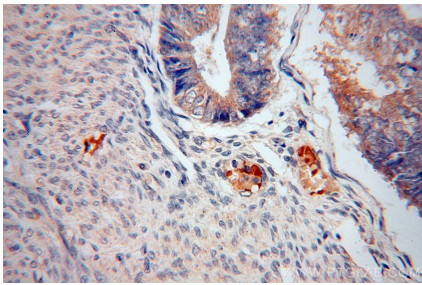
W: ptgcn.com

This product is exclusively available under Proteintech Group brand and is not available to purchase from any other manufacturer.

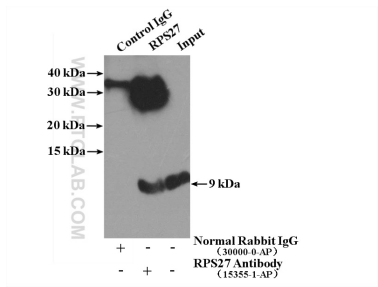
Selected Validation Data



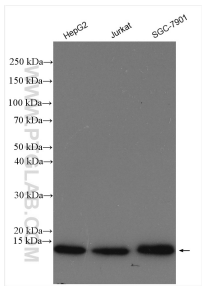
Immunohistochemical analysis of paraffin-embedded human endometrial cancer using 15355-1-AP (RPS27 antibody) at dilution of 1:50 (under 10x lens).



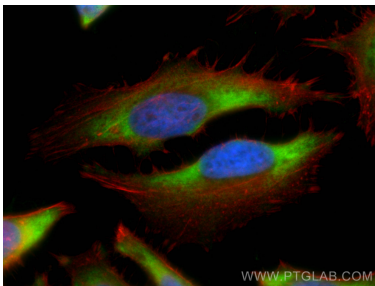
Immunohistochemical analysis of paraffin-embedded human endometrial cancer using 15355-1-AP (RPS27 antibody) at dilution of 1:50 (under 40x lens).



IP result of anti-RPS27 (IP:15355-1-AP, 4ug; Detection:15355-1-AP 1:500) with SGC-7901 cells lysate 2400ug.



Various lysates were subjected to SDS PAGE followed by western blot with 15355-1-AP (RPS27 antibody) at dilution of 1:3000 incubated at room temperature for 1.5 hours.



Immunofluorescent analysis of (-20°C Ethanol) fixed HeLa cells using RPS27 antibody (15355-1-AP) at dilution of 1:400 and CoraLite®488-Conjugated AffiniPure Goat Anti-Rabbit IgG(H+L), CL594-Phalloidin (red).