

For Research Use Only

# CRIP1 Polyclonal antibody

Catalog Number: 15349-1-AP

Featured Product

4 Publications



## Basic Information

### Catalog Number:

15349-1-AP

### Size:

267 ug/ml

### Source:

Rabbit

### Isotype:

IgG

### Immunogen Catalog Number:

AG7588

### GenBank Accession Number:

BC002738

### GeneID (NCBI):

1396

### UNIPROT ID:

P50238

### Full Name:

cysteine-rich protein 1 (intestinal)

### Calculated MW:

9 kDa

### Observed MW:

8-9 kDa

### Purification Method:

Antigen affinity purification

### Recommended Dilutions:

WB 1:500-1:1000

IHC 1:50-1:500

IF/ICC 1:50-1:500

## Applications

### Tested Applications:

WB, IHC, IF/ICC, ELISA

### Cited Applications:

WB, IHC, IP, CoIP

### Species Specificity:

human

### Cited Species:

human

### Positive Controls:

WB : HeLa cells, PC-3 cells

IHC : human stomach cancer tissue,

IF/ICC : HeLa cells,

**Note-IHC: suggested antigen retrieval with TE buffer pH 9.0; (\*) Alternatively, antigen retrieval may be performed with citrate buffer pH 6.0**

## Background Information

CRIP1 also known as CRIP, CRP1, belongs to the LIM/double zinc finger protein family. CRIP1 has a unique double zinc finger motif, which is mainly expressed in the intestine, and may be involved in intestinal zinc transport (PMID: 31312368, 1946385). CRIP1 is overexpressed in immune cells of the epithelium and may play an important role in gut immunity (PMID: 27836662).

## Notable Publications

Author	Pubmed ID	Journal	Application
Yujuan Liu	34413913	Dis Markers	WB
Peixia Tang	38199044	EBioMedicine	WB, CoIP
Xiaoling Deng	37224580	Leuk Res	WB, CoIP

## Storage

### Storage:

Store at -20°C. Stable for one year after shipment.

### Storage Buffer:

PBS with 0.02% sodium azide and 50% glycerol pH 7.3.

Aliquoting is unnecessary for -20°C storage

For technical support and original validation data for this product please contact:

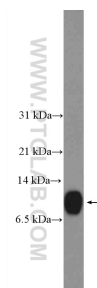
T: 4006900926

E: [Proteintech-CN@ptglab.com](mailto:Proteintech-CN@ptglab.com)

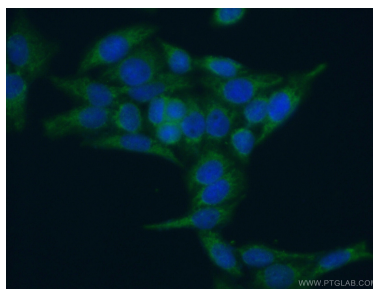
W: [ptgcn.com](http://ptgcn.com)

This product is exclusively available under Proteintech Group brand and is not available to purchase from any other manufacturer.

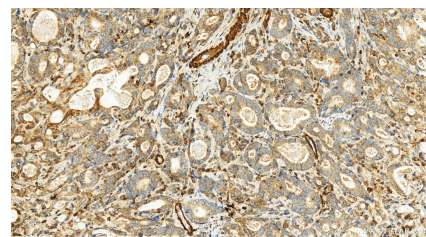
## Selected Validation Data



HeLa cells were subjected to SDS PAGE followed by western blot with 15349-1-AP (CRIP1 Antibody) at dilution of 1:600 incubated at room temperature for 1.5 hours.



Immunofluorescent analysis of (-20°C Ethanol) fixed HeLa cells using 15349-1-AP (CRIP1 antibody) at dilution of 1:50 and Alexa Fluor 488-conjugated AffiniPure Goat Anti-Rabbit IgG(H+L).



Immunohistochemical analysis of paraffin-embedded human stomach cancer tissue slide using 15349-1-AP (CRIP1 antibody) at dilution of 1:200 (under 20x lens). Heat mediated antigen retrieval with Tris-EDTA buffer (pH 9.0).