

For Research Use Only

# MRPL9 Polyclonal antibody

Catalog Number: 15342-1-AP

4 Publications



## Basic Information

Catalog Number:

15342-1-AP

Concentration:

260 ug/ml

Source:

Rabbit

Isotype:

IgG

Immunogen Catalog Number:

AG7545

GenBank Accession Number:

BC004517

GeneID (NCBI):

65005

UNIPROT ID:

Q9BYD2

Full Name:

mitochondrial ribosomal protein L9

Calculated MW:

30 kDa

Observed MW:

26-28 kDa

Purification Method:

Antigen affinity purification

Recommended Dilutions:

WB 1:500-1:2000

IHC 1:50-1:500

IF/ICC 1:200-1:800

## Applications

Tested Applications:

WB, IHC, IF/ICC, ELISA

Cited Applications:

WB, IHC, IF, ColP

Species Specificity:

human, mouse, rat

Cited Species:

human

**Note-IHC: suggested antigen retrieval with TE buffer pH 9.0; (\*) Alternatively, antigen retrieval may be performed with citrate buffer pH 6.0**

Positive Controls:

WB : HeLa cells, HepG2 cells, MCF-7 cells, PC-3 cells

IHC : human breast cancer tissue,

IF/ICC : HeLa cells,

## Background Information

### Notable Publications

Author	Pubmed ID	Journal	Application
Hui-Min Zhang	36233293	Int J Mol Sci	WB,IHC,IF,ColP
Cong Xie	36684217	Front Surg	WB
Shabnam Bakhshalizadeh	37148394	Hum Genet	WB

## Storage

Storage:

Store at -20°C. Stable for one year after shipment.

Storage Buffer:

PBS with 0.02% sodium azide and 50% glycerol pH 7.3.

Aliquoting is unnecessary for -20°C storage

For technical support and original validation data for this product please contact:

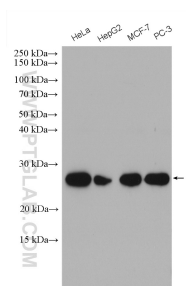
T: 4006900926

E: [Proteintech-CN@ptglab.com](mailto:Proteintech-CN@ptglab.com)

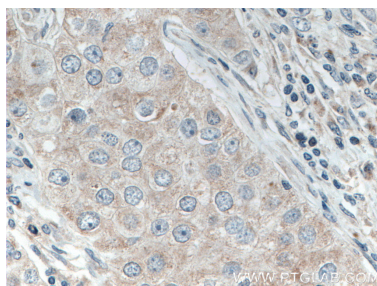
W: [ptgcn.com](http://ptgcn.com)

This product is exclusively available under Proteintech Group brand and is not available to purchase from any other manufacturer.

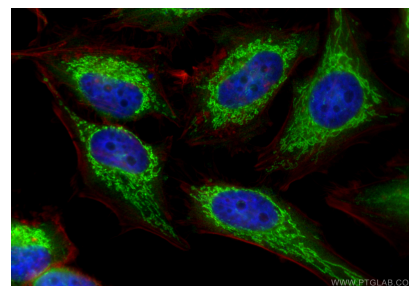
## Selected Validation Data



Various lysates were subjected to SDS PAGE followed by western blot with 15342-1-AP (MRPL9 antibody) at dilution of 1:1000 incubated at room temperature for 1.5 hours.



Immunohistochemical analysis of paraffin-embedded human breast cancer tissue slide using 15342-1-AP (MRPL9 antibody) at dilution of 1:200 (under 40x lens. Heat mediated antigen retrieval with Tris-EDTA buffer (pH 9.0).



Immunofluorescent analysis of (4% PFA) fixed HeLa cells using MRPL9 antibody (15342-1-AP) at dilution of 1:400 and CoraLite®488-Conjugated Goat Anti-Rabbit IgG(H+L) (SA00013-2), CL594-Phalloidin (red).