

For Research Use Only

POLR3D Polyclonal antibody

Catalog Number: 15339-1-AP

1 Publications



Basic Information

Catalog Number:

15339-1-AP

Size:

550 µg/ml

Source:

Rabbit

Isotype:

IgG

Immunogen Catalog Number:

AG7542

GenBank Accession Number:

BC004484

GeneID (NCBI):

661

UNIPROT ID:

P05423

Full Name:

polymerase (RNA) III (DNA directed)

polypeptide D, 44kDa

Calculated MW:

44 kDa

Observed MW:

44 kDa

Purification Method:

Antigen affinity purification

Recommended Dilutions:

WB 1:1000-1:4000

IP 0.5-4.0 µg for 1.0-3.0 mg of total protein lysate

IF/ICC 1:50-1:500

Applications

Tested Applications:

WB, IF/ICC, IP, ELISA

Cited Applications:

WB

Species Specificity:

human, mouse, rat

Cited Species:

human

Positive Controls:

WB : mouse brain tissue, mouse testis tissue, HeLa cells, rat brain tissue, rat testis tissue

IP : HeLa cells,

IF/ICC : HeLa cells,

Background Information

DNA-dependent RNA polymerase catalyzes the transcription of DNA into RNA using the four ribonucleoside triphosphates as substrates. Polymerase (RNA) III (DNA directed) polypeptide D (POLR3D) plays a key role in sensing and limiting infection by intracellular bacteria and DNA viruses and acts as nuclear and cytosolic DNA sensor involved in innate immune response. POLR3D can sense non-self dsDNA that serves as template for transcription into dsRNA.

Notable Publications

Author	Pubmed ID	Journal	Application
Richa Ahuja	28488757	FEBS J	WB

Storage

Storage:

Store at -20°C. Stable for one year after shipment.

Storage Buffer:

PBS with 0.02% sodium azide and 50% glycerol pH 7.3.

Aliquoting is unnecessary for -20°C storage

For technical support and original validation data for this product please contact:

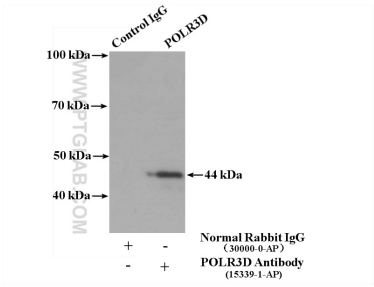
T: 4006900926

E: Proteintech-CN@ptglab.com

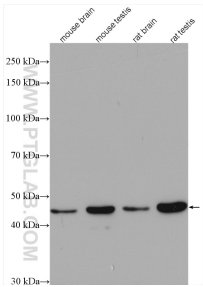
W: ptgcn.com

This product is exclusively available under Proteintech Group brand and is not available to purchase from any other manufacturer.

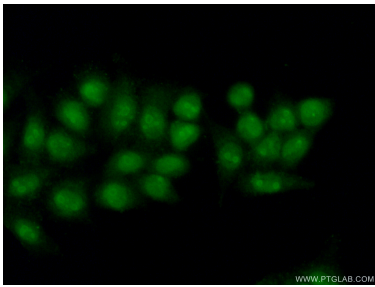
Selected Validation Data



IP result of anti-POLR3D (IP:15339-1-AP, 4ug; Detection:15339-1-AP 1:300) with HeLa cells lysate 2600 ug.



Various lysates were subjected to SDS PAGE followed by western blot with 15339-1-AP (POLR3D antibody) at dilution of 1:2000 incubated at room temperature for 1.5 hours.



Immunofluorescent analysis of (10% Formaldehyde) fixed HeLa cells using 15339-1-AP (POLR3D antibody) at dilution of 1:50 and Alexa Fluor 488-conjugated AffiniPure Goat Anti-Rabbit IgG(H+L).