

For Research Use Only

RCL1 Polyclonal antibody

Catalog Number: 15330-1-AP

2 Publications



Basic Information

Catalog Number:

15330-1-AP

Size:

500 µg/ml

Source:

Rabbit

Isotype:

IgG

Immunogen Catalog Number:

AG7058

GenBank Accession Number:

BC001025

GeneID (NCBI):

10171

UNIPROT ID:

Q9Y2P8

Full Name:

RNA terminal phosphate cyclase-like

1

Calculated MW:

41 kDa

Observed MW:

41 kDa

Purification Method:

Antigen affinity purification

Recommended Dilutions:

WB 1:500-1:2000

IF/ICC 1:10-1:100

Applications

Tested Applications:

WB, IF/ICC, ELISA

Cited Applications:

WB, IF

Species Specificity:

human, mouse, rat

Cited Species:

human

Positive Controls:

WB : A431 cells, HepG2 cells, A375 cells, MCF-7 cells

IF/ICC : A375 cells,

Background Information

Notable Publications

Author	Pubmed ID	Journal	Application
Yu Jiaze	35264160	Cancer Cell Int	WB,IF
Yong Wang	37451810	J Mol Cell Biol	WB,IF

Storage

Storage:

Store at -20°C. Stable for one year after shipment.

Storage Buffer:

PBS with 0.02% sodium azide and 50% glycerol pH 7.3.

Aliquoting is unnecessary for -20°C storage

For technical support and original validation data for this product please contact:

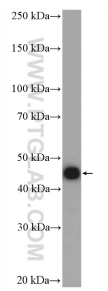
T: 4006900926

E: Proteintech-CN@ptglab.com

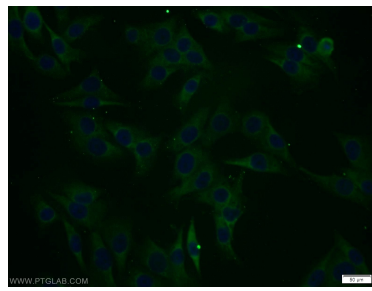
W: ptgcn.com

This product is exclusively available under Proteintech Group brand and is not available to purchase from any other manufacturer.

Selected Validation Data



A431 cells were subjected to SDS PAGE followed by western blot with 15330-1-AP (RCL1 antibody) at dilution of 1:1000 incubated at room temperature for 1.5 hours.



Immunofluorescent analysis of A375 cells using 15330-1-AP (RCL1 antibody) at dilution of 1:25 and Alexa Fluor 488-conjugated AffiniPure Goat Anti-Rabbit IgG(H+L).