

For Research Use Only

# GRB14 Polyclonal antibody

Catalog Number: 15298-1-AP



## Basic Information

<b>Catalog Number:</b> 15298-1-AP	<b>GenBank Accession Number:</b> BC053559	<b>Purification Method:</b> Antigen affinity purification
<b>Size:</b> 200 µg/ml	<b>GeneID (NCBI):</b> 2888	<b>Recommended Dilutions:</b> WB 1:500-1:1000 IHC 1:20-1:200
<b>Source:</b> Rabbit	<b>UNIPROT ID:</b> Q14449	
<b>Isotype:</b> IgG	<b>Full Name:</b> growth factor receptor-bound protein 14	
<b>Immunogen Catalog Number:</b> AG7554	<b>Calculated MW:</b> 61 kDa	
	<b>Observed MW:</b> 61 kDa	

## Applications

<b>Tested Applications:</b> IHC, WB, ELISA	<b>Positive Controls:</b> WB : DU 145 cells, IHC : human ovary tumor tissue,
<b>Species Specificity:</b> human, mouse, rat	
<b>Note-IHC: suggested antigen retrieval with TE buffer pH 9.0; (*) Alternatively, antigen retrieval may be performed with citrate buffer pH 6.0</b>	

## Background Information

GRB14 belongs to the GRB7/10/14 family. It is an adapter protein which modulates coupling of cell surface receptor kinases with specific signaling pathways. GRB14 is a target for a PDGF regulated serine kinase, an interaction that does not require PDGFR-GRB14 association. GRB14 is about 58-65kd in WB test.

## Storage

**Storage:**  
Store at -20°C. Stable for one year after shipment.  
**Storage Buffer:**  
PBS with 0.02% sodium azide and 50% glycerol pH 7.3.  
Aliquoting is unnecessary for -20°C storage

For technical support and original validation data for this product please contact:

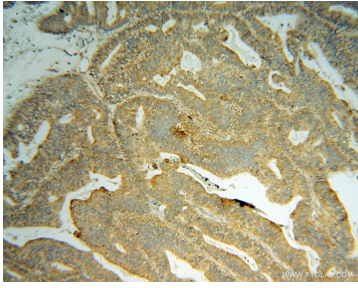
T: 4006900926

E: [Proteintech-CN@ptglab.com](mailto:Proteintech-CN@ptglab.com)

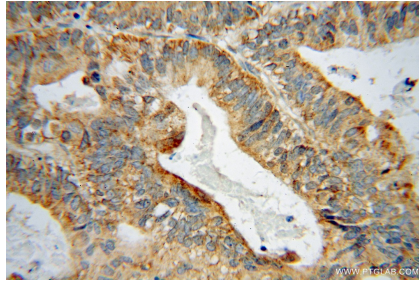
W: [ptgcn.com](http://ptgcn.com)

**This product is exclusively available under Proteintech Group brand and is not available to purchase from any other manufacturer.**

## Selected Validation Data



Immunohistochemical analysis of paraffin-embedded human ovary tumor using 15298-1-AP (GRB14 antibody) at dilution of 1:50 (under 10x lens).



Immunohistochemical analysis of paraffin-embedded human ovary tumor using 15298-1-AP (GRB14 antibody) at dilution of 1:50 (under 40x lens).



DU 145 cells were subjected to SDS PAGE followed by western blot with 15298-1-AP (GRB14 Antibody) at dilution of 1:600 incubated at room temperature for 1.5 hours.