

For Research Use Only

ARFGAP3 Polyclonal antibody

Catalog Number: 15293-1-AP

Featured Product

3 Publications



Basic Information

Catalog Number:

15293-1-AP

Size:

750 µg/ml

Source:

Rabbit

Isotype:

IgG

Immunogen Catalog Number:

AG7536

GenBank Accession Number:

BC005122

GeneID (NCBI):

26286

UNIPROT ID:

Q9NP61

Full Name:

ADP-ribosylation factor GTPase activating protein 3

Calculated MW:

57 kDa

Observed MW:

57-66 kDa

Purification Method:

Antigen affinity purification

Recommended Dilutions:

WB 1:1000-1:4000

IP 0.5-4.0 µg for 1.0-3.0 mg of total protein lysate

IHC 1:20-1:200

IF 1:10-1:100

Applications

Tested Applications:

IF/ICC, IHC, IP, WB, ELISA

Cited Applications:

WB, IF

Species Specificity:

human, mouse, rat

Cited Species:

human, mouse

Note-IHC: suggested antigen retrieval with TE buffer pH 9.0; (*) Alternatively, antigen retrieval may be performed with citrate buffer pH 6.0

Positive Controls:

WB: HepG2 cells, mouse brain tissue, Jurkat cells

IP: HepG2 cells,

IHC: human breast cancer tissue,

IF: A431 cells, HepG2 cells

Background Information

ARFGAP3, also named as ADP-ribosylation factor GTPase-activating protein 3, is a 516 amino acid protein, which is widely expressed with highest expression in endocrine glands (pancreas, pituitary gland, salivary gland, and prostate). ARFGAP3 is a GTPase-activating protein (GAP) for ADP ribosylation factor 1 (ARF1). Hydrolysis of ARF1-bound GTP may lead to dissociation of coatamer from Golgi-derived membranes to allow fusion with target membranes. The calculated molecular weight of ARFGAP3 is 57 kDa, but modified ARFGAP3 is about 57-66 kDa.

Notable Publications

Author	Pubmed ID	Journal	Application
Xihua Yue	34493279	BMC Biol	WB
Xihua Yue	34876695	Commun Biol	WB
Suting Li	36476390	Cell Signal	IF

Storage

Storage:

Store at -20°C. Stable for one year after shipment.

Storage Buffer:

PBS with 0.02% sodium azide and 50% glycerol pH 7.3.

Aliquoting is unnecessary for -20°C storage

For technical support and original validation data for this product please contact:

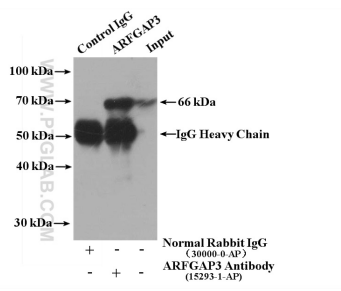
T: 4006900926

E: Proteintech-CN@ptglab.com

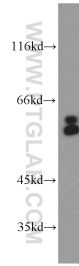
W: ptgcn.com

This product is exclusively available under Proteintech Group brand and is not available to purchase from any other manufacturer.

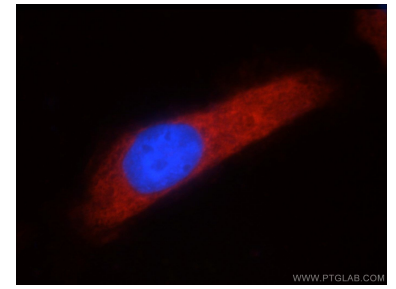
Selected Validation Data



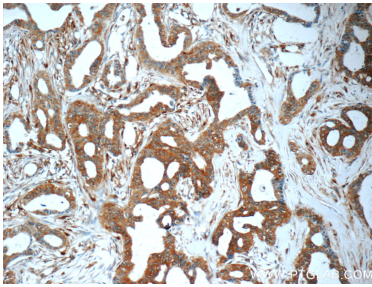
IP result of anti-ARFGAP3 (IP:15293-1-AP, 4ug; Detection:15293-1-AP 1:2000) with HepG2 cells lysate 3000 ug.



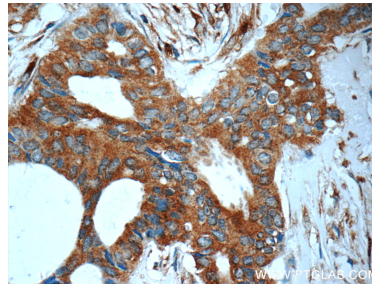
HepG2 cells were subjected to SDS PAGE followed by western blot with 15293-1-AP (ARFGAP3 antibody) at dilution of 1:2000 incubated at room temperature for 1.5 hours.



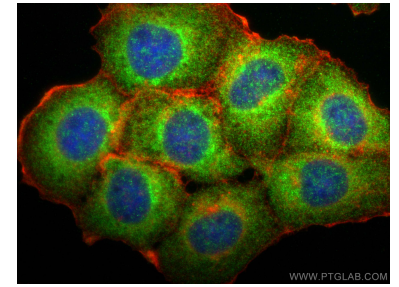
Immunofluorescent analysis of A431 cells using 15293-1-AP (ARFGAP3 antibody) at dilution of 1:25 and Rhodamine-Goat anti-Rabbit IgG.



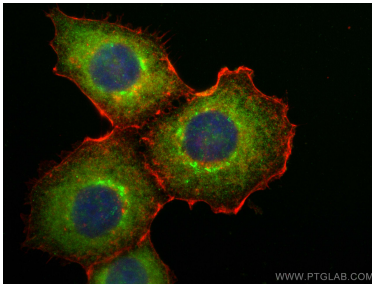
Immunohistochemical analysis of paraffin-embedded human breast cancer tissue slide using 15293-1-AP (ARFGAP3 Antibody) at dilution of 1:50 (under 10x lens).



Immunohistochemical analysis of paraffin-embedded human breast cancer tissue slide using 15293-1-AP (ARFGAP3 Antibody) at dilution of 1:50 (under 40x lens).



Immunofluorescent analysis of (-20°C Methanol) fixed A431 cells using ARFGAP3 antibody (15293-1-AP) at dilution of 1:400 and CoraLite®488-Conjugated AffiniPure Goat Anti-Rabbit IgG(H+L), CoraLite®594 Beta Actin antibody (CL594-66009, Clone: 2D4H5, red).



Immunofluorescent analysis of (-20°C Methanol) fixed A431 cells using ARFGAP3 antibody (15293-1-AP) at dilution of 1:400 and CoraLite®488-Conjugated AffiniPure Goat Anti-Rabbit IgG(H+L), CoraLite®594 Beta Actin antibody (CL594-66009, Clone: 2D4H5, red).