

For Research Use Only

# MRPS25 Polyclonal antibody

Catalog Number: 15277-1-AP

Featured Product

6 Publications



## Basic Information

### Catalog Number:

15277-1-AP

### Size:

500 ug/ml

### Source:

Rabbit

### Isotype:

IgG

### Immunogen Catalog Number:

AG7395

### GenBank Accession Number:

BC003590

### GeneID (NCBI):

64432

### UNIPROT ID:

P82663

### Full Name:

mitochondrial ribosomal protein S25

### Calculated MW:

20 kDa

### Observed MW:

20 kDa

### Purification Method:

Antigen affinity purification

### Recommended Dilutions:

WB 1:500-1:2000

IP 0.5-4.0 ug for 1.0-3.0 mg of total protein lysate

IHC 1:50-1:500

## Applications

### Tested Applications:

WB, IHC, IP, ELISA

### Cited Applications:

WB, IP

### Species Specificity:

human, mouse, rat

### Cited Species:

human, mouse

**Note-IHC: suggested antigen retrieval with TE buffer pH 9.0; (\*) Alternatively, antigen retrieval may be performed with citrate buffer pH 6.0**

### Positive Controls:

WB : HEK-293 cells, HepG2 cells

IP : HEK-293 cells,

IHC : human intrahepatic cholangiocarcinoma tissue, human stomach tissue

## Background Information

Mitochondrial ribosomal protein S25 (MRPS25) belongs to the ribosomal protein S25/L51 family. It is a component of the mitochondrial ribosome small subunit (28S). The variant segregated with the disease and substitutes a highly conserved proline residue with leucine (p.P72L) that, based on the high-resolution structure of the 28S ribosome, is predicted to compromise inter-protein contacts and destabilize the small subunit.

## Notable Publications

Author	Pubmed ID	Journal	Application
Benedetta Ruzzenente	33606205	Methods Mol Biol	WB
Tara R Richman	25816300	PLoS Genet	WB
Taru Hilander	39015150	iScience	WB

## Storage

### Storage:

Store at -20°C. Stable for one year after shipment.

### Storage Buffer:

PBS with 0.02% sodium azide and 50% glycerol pH 7.3.

Aliquoting is unnecessary for -20°C storage

For technical support and original validation data for this product please contact:

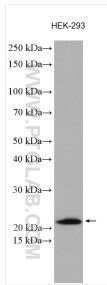
T: 4006900926

E: [Proteintech-CN@ptglab.com](mailto:Proteintech-CN@ptglab.com)

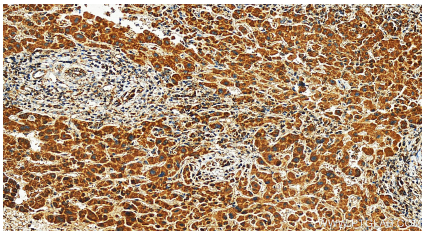
W: [ptgcn.com](http://ptgcn.com)

This product is exclusively available under Proteintech Group brand and is not available to purchase from any other manufacturer.

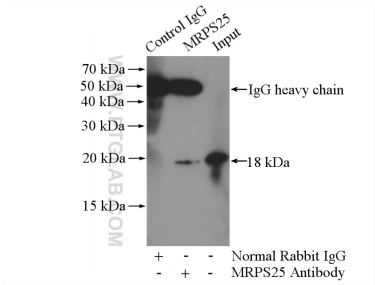
Selected Validation Data



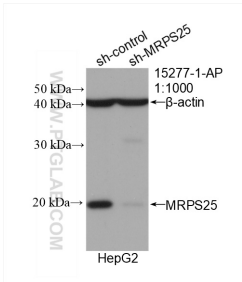
HEK-293 cells were subjected to SDS PAGE followed by western blot with 15277-1-AP (MRPS25 antibody) at dilution of 1:1000 incubated at room temperature for 1.5 hours.



Immunohistochemical analysis of paraffin-embedded human intrahepatic cholangiocarcinoma tissue slide using 15277-1-AP (MRPS25 antibody) at dilution of 1:200 (under 20x lens). Heat mediated antigen retrieval with Tris-EDTA buffer (pH 9.0).



IP result of anti-MRPS25 (IP:15277-1-AP, 4ug; Detection:15277-1-AP 1:500) with HEK-293 cells lysate 1600ug.



WB result of MRPS25 antibody (15277-1-AP; 1:1000; incubated at room temperature for 1.5 hours) with sh-Control and sh-MRPS25 transfected HepG2 cells.