

For Research Use Only

# EIF1 Polyclonal antibody, PBS Only

Catalog Number:15276-1-PBS



## Basic Information

Catalog Number:

15276-1-PBS

Source:

Rabbit

Isotype:

IgG

Immunogen Catalog Number:

AG7394

GenBank Accession Number:

BC005118

GeneID (NCBI):

10209

UNIPROT ID:

P41567

Full Name:

eukaryotic translation initiation factor 1

Calculated MW:

13 kDa

Purification Method:

Antigen affinity purification

## Applications

Tested Applications:

IHC, IP, ELISA

Species Specificity:

human

## Background Information

It is a necessary for scanning and involved in initiation site selection. Promotes the assembly of 48S ribosomal complexes at the authentic initiation codon of a conventional capped mRNA. Molecular weight is 13kd.

## Storage

Storage:

Store at -80°C.

**The product is shipped with ice packs. Upon receipt, store it immediately at -80°C**

Storage Buffer:

PBS only, pH7.3

For technical support and original validation data for this product please contact:

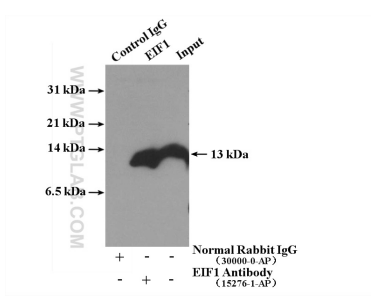
T: 4006900926

E: [Proteintech-CN@ptglab.com](mailto:Proteintech-CN@ptglab.com)

W: [ptgcn.com](http://ptgcn.com)

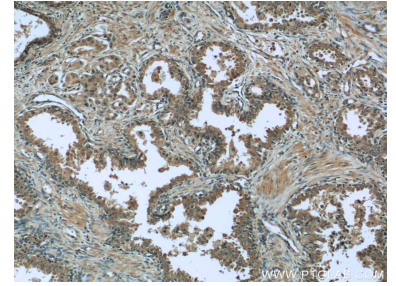
**This product is exclusively available under Proteintech Group brand and is not available to purchase from any other manufacturer.**

## Selected Validation Data

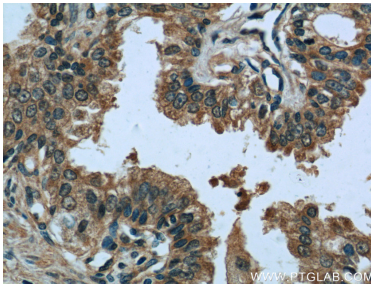


IP result of anti-EIF1 (IP:15276-1-AP, 4ug; Detection:15276-1-AP 1:600) with Jurkat cells lysate 3440 ug. This data was developed using the same antibody clone with 15276-1-PBS in a different storage buffer formulation.

Jurkat cells were subjected to SDS PAGE followed by western blot with 15276-1-AP (EIF1 Antibody) at dilution of 1:600 incubated at room temperature for 1.5 hours.



Immunohistochemical analysis of paraffin-embedded human prostate cancer tissue slide using 15276-1-AP (EIF1 Antibody) at dilution of 1:50 (under 10x lens). This data was developed using the same antibody clone with 15276-1-PBS in a different storage buffer formulation.



Immunohistochemical analysis of paraffin-embedded human prostate cancer tissue slide using 15276-1-AP (EIF1 Antibody) at dilution of 1:50 (under 40x lens). This data was developed using the same antibody clone with 15276-1-PBS in a different storage buffer formulation.