

EIF1 Polyclonal antibody

Catalog Number: 15276-1-AP

4 Publications

Basic Information

Catalog Number:

15276-1-AP

Size:

400 µg/ml

Source:

Rabbit

Isotype:

IgG

Immunogen Catalog Number:

AG7394

GenBank Accession Number:

BC005118

GeneID (NCBI):

10209

UNIPROT ID:

P41567

Full Name:

eukaryotic translation initiation factor 1

Calculated MW:

13 kDa

Purification Method:

Antigen affinity purification

Recommended Dilutions:

WB 1:500-1:1000

IP 0.5-4.0 µg for 1.0-3.0 mg of total protein lysate

IHC 1:20-1:200

Applications

Tested Applications:

IHC, IP, WB, ELISA

Cited Applications:

WB, IHC

Species Specificity:

human

Cited Species:

human, monkey

Note-IHC: suggested antigen retrieval with TE buffer pH 9.0; (*) Alternatively, antigen retrieval may be performed with citrate buffer pH 6.0

Positive Controls:

WB : Jurkat cells, HeLa cells

IP : Jurkat cells,

IHC : human prostate cancer tissue,

Background Information

It is a necessary for scanning and involved in initiation site selection. Promotes the assembly of 48S ribosomal complexes at the authentic initiation codon of a conventional capped mRNA. Molecular weight is 13kd.

Notable Publications

Author	Pubmed ID	Journal	Application
Ranen Aviner	38335237	PLoS Pathog	WB
Meilin Xue	38302992	J Hematol Oncol	WB
Huan Feng	37662947	Front Immunol	IHC

Storage

Storage:

Store at -20°C. Stable for one year after shipment.

Storage Buffer:

PBS with 0.02% sodium azide and 50% glycerol pH 7.3.

Aliquoting is unnecessary for -20°C storage

For technical support and original validation data for this product please contact:

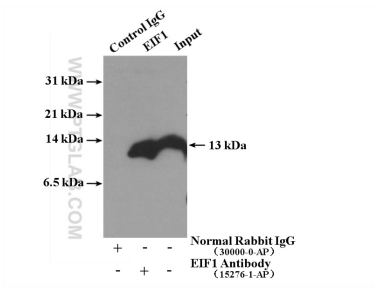
T: 4006900926

E: Proteintech-CN@ptglab.com

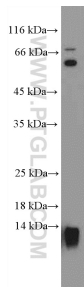
W: ptgcn.com

This product is exclusively available under Proteintech Group brand and is not available to purchase from any other manufacturer.

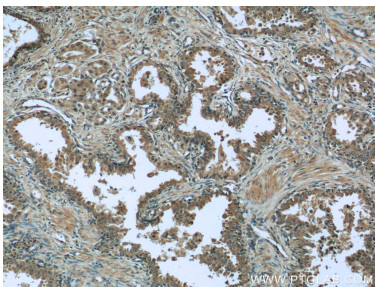
Selected Validation Data



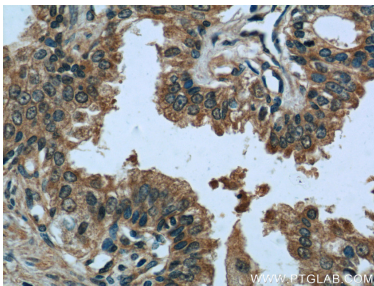
IP result of anti-EIF1 (IP:15276-1-AP, 4ug; Detection:15276-1-AP 1:600) with Jurkat cells lysate 3440 ug.



Jurkat cells were subjected to SDS PAGE followed by western blot with 15276-1-AP (EIF1 Antibody) at dilution of 1:600 incubated at room temperature for 1.5 hours.



Immunohistochemical analysis of paraffin-embedded human prostate cancer tissue slide using 15276-1-AP (EIF1 Antibody) at dilution of 1:50 (under 10x lens).



Immunohistochemical analysis of paraffin-embedded human prostate cancer tissue slide using 15276-1-AP (EIF1 Antibody) at dilution of 1:50 (under 40x lens).