

For Research Use Only

# KIF1B Polyclonal antibody

Catalog Number: 15263-1-AP

Featured Product

6 Publications



## Basic Information

### Catalog Number:

15263-1-AP

### Size:

360 µg/ml

### Source:

Rabbit

### Isotype:

IgG

### Immunogen Catalog Number:

AG7263

### GenBank Accession Number:

BC001415

### GeneID (NCBI):

23095

### UNIPROT ID:

O60333

### Full Name:

kinesin family member 1B

### Calculated MW:

204 kDa

### Observed MW:

199 kDa, 204 kDa

### Purification Method:

Antigen affinity purification

### Recommended Dilutions:

WB 1:500-1:1000

IP 0.5-4.0 µg for 1.0-3.0 mg of total protein lysate

IHC 1:50-1:500

## Applications

### Tested Applications:

IHC, IP, WB, ELISA

### Cited Applications:

WB, IF, IP

### Species Specificity:

human, mouse, rat

### Cited Species:

human, mouse, rat

**Note-IHC: suggested antigen retrieval with TE buffer pH 9.0; (\*) Alternatively, antigen retrieval may be performed with citrate buffer pH 6.0**

### Positive Controls:

WB : HeLa cells, HEK-293 cells

IP : HeLa cells,

IHC : human liver cancer tissue, human skeletal muscle tissue, mouse brain tissue

## Background Information

### Notable Publications

Author	Pubmed ID	Journal	Application
Yiyuan Kang	34772551	J Hazard Mater	IP
Kelsey Michelle Wells	35587649	Elife	IF
Vinicius Toledo Ribas	33637688	Cell Death Dis	WB

## Storage

### Storage:

Store at -20°C. Stable for one year after shipment.

### Storage Buffer:

PBS with 0.02% sodium azide and 50% glycerol pH 7.3.

Aliquoting is unnecessary for -20°C storage

For technical support and original validation data for this product please contact:

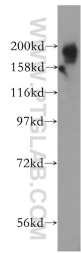
T: 4006900926

E: [Proteintech-CN@ptglab.com](mailto:Proteintech-CN@ptglab.com)

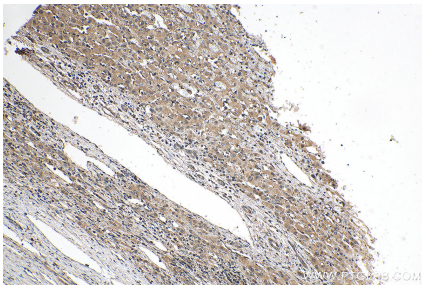
W: [ptgcn.com](http://ptgcn.com)

This product is exclusively available under Proteintech Group brand and is not available to purchase from any other manufacturer.

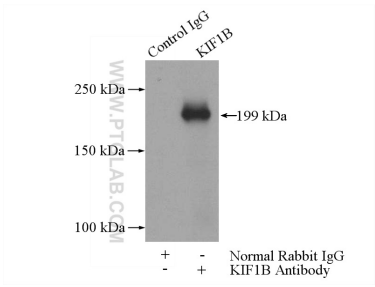
Selected Validation Data



HeLa cells were subjected to SDS PAGE followed by western blot with 15263-1-AP (KIF1B antibody) at dilution of 1:500 incubated at room temperature for 1.5 hours.



Immunohistochemical analysis of paraffin-embedded human liver cancer tissue slide using 15263-1-AP (KIF1B antibody) at dilution of 1:200 (under 10x lens). Heat mediated antigen retrieval with Tris-EDTA buffer (pH 9.0).



IP result of anti-KIF1B (IP:15263-1-AP, 5ug; Detection:15263-1-AP 1:700) with HeLa cells lysate 2000ug.