

For Research Use Only

PSMD13 Polyclonal antibody

Catalog Number: 15261-1-AP

Featured Product

6 Publications



Basic Information

Catalog Number:

15261-1-AP

Concentration:

260 ug/ml

Source:

Rabbit

Isotype:

IgG

Immunogen Catalog Number:

AG7257

GenBank Accession Number:

BC001100

GeneID (NCBI):

5719

UNIPROT ID:

Q9UNM6

Full Name:

proteasome (prosome, macropain)
26S subunit, non-ATPase, 13

Calculated MW:

43 kDa

Observed MW:

43 kDa

Purification Method:

Antigen affinity purification

Recommended Dilutions:

WB 1:500-1:2000

IP 0.5-4.0 ug for 1.0-3.0 mg of total
protein lysate

IHC 1:50-1:500

IF/ICC 1:10-1:100

Applications

Tested Applications:

WB, IHC, IF/ICC, IP, ELISA

Cited Applications:

WB, IHC

Species Specificity:

human

Cited Species:

human, mouse

**Note-IHC: suggested antigen retrieval with
TE buffer pH 9.0; (*) Alternatively, antigen
retrieval may be performed with citrate
buffer pH 6.0**

Positive Controls:

WB : HEK-293 cells, HepG2 cells, HeLa cells, Jurkat
cells, Y79 cells

IP : HEK-293T cells,

IHC : human kidney tissue, human colon cancer tissue

IF/ICC : HeLa cells,

Background Information

Notable Publications

Author	Pubmed ID	Journal	Application
Songhua Li	27225770	J Neurosci	WB
Songhua Li	24849605	J Biol Chem	WB,IHC
Yun Li	39738579	Mamm Genome	WB,IHC

Storage

Storage:

Store at -20°C. Stable for one year after shipment.

Storage Buffer:

PBS with 0.02% sodium azide and 50% glycerol, pH7.3

Aliquoting is unnecessary for -20°C storage

For technical support and original validation data for this product please contact:

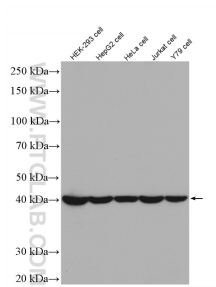
T: 4006900926

E: Proteintech-CN@ptglab.com

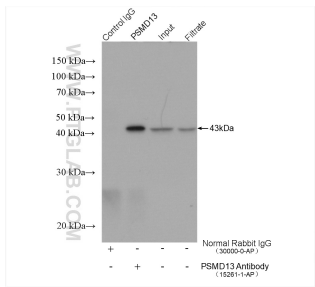
W: ptgcn.com

**This product is exclusively available under Proteintech
Group brand and is not available to purchase from any
other manufacturer.**

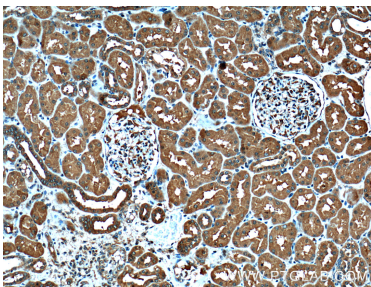
Selected Validation Data



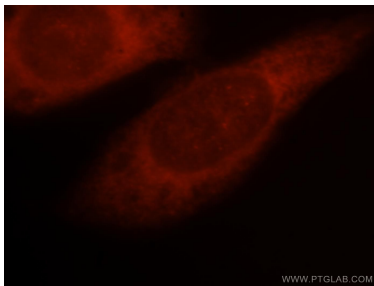
Various lysates were subjected to SDS PAGE followed by western blot with 15261-1-AP (PSMD13 antibody) at dilution of 1:1000 incubated at room temperature for 1.5 hours.



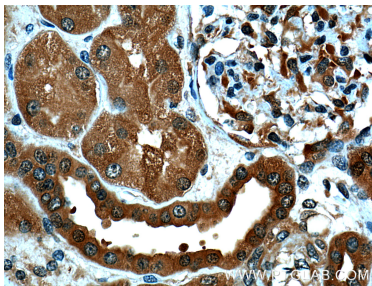
IP result of anti-PSMD13 (IP:15261-1-AP, 4ug; Detection:15261-1-AP 1:1000) with HEK-293T cells lysate 1200 ug.



Immunohistochemical analysis of paraffin-embedded human kidney tissue slide using 15261-1-AP (PSMD13 Antibody) at dilution of 1:200 (under 10x lens).



Immunofluorescent analysis of HeLa cells, using PSMD13 antibody 15261-1-AP at 1:25 dilution and Rhodamine-labeled goat anti-rabbit IgG (red).



Immunohistochemical analysis of paraffin-embedded human kidney tissue slide using 15261-1-AP (PSMD13 Antibody) at dilution of 1:200 (under 40x lens).