

H6PD Polyclonal antibody

Catalog Number: 15255-1-AP

Featured Product

3 Publications

Basic Information

Catalog Number:

15255-1-AP

Size:

750 µg/ml

Source:

Rabbit

Isotype:

IgG

Immunogen Catalog Number:

AG7109

GenBank Accession Number:

BC081559

GeneID (NCBI):

9563

UNIPROT ID:

O95479

Full Name:

hexose-6-phosphate dehydrogenase
(glucose 1-dehydrogenase)

Calculated MW:

89 kDa

Observed MW:

89-95 kDa

Purification Method:

Antigen affinity purification

Recommended Dilutions:

WB 1:500-1:2000

IP 0.5-4.0 µg for 1.0-3.0 mg of total
protein lysate

IHC 1:20-1:200

Applications

Tested Applications:

IHC, IP, WB, ELISA

Cited Applications:

WB, IF

Species Specificity:

human, mouse, rat

Cited Species:

human, rat, mouse

**Note-IHC: suggested antigen retrieval with
TE buffer pH 9.0; (*) Alternatively, antigen
retrieval may be performed with citrate
buffer pH 6.0**

Positive Controls:

WB : HepG2 cells, mouse liver tissue, HeLa cells

IP : HepG2 cells,

IHC : human hepatocirrhosis tissue, human liver cancer
tissue

Background Information

Hexose-6-phosphate dehydrogenase (H6PD) is also named as GDH,6PGL. It is the main NADPH generating enzyme in the lumen of the endoplasmic reticulum. H6PD is regarded as an ancillary enzyme in prerenal glucocorticoid activation and probably acts as a nutrient sensor and as a prosurvival factor (PMID:21620971). H6PD is a glycoprotein and has been shown tissue differences in glycosylation status might explain both the difference in migration on SDS-PAGE gels as well as in activity. Defects in H6PD are a cause of cortisone reductase deficiency (CRD). This antibody is specific to H6PD.

Notable Publications

Author	Pubmed ID	Journal	Application
Xixi Guo	31480692	Biomolecules	WB
Alzbeta Hulikova	35357563	Basic Res Cardiol	IF
Eva-Maria Patronas	37867937	iScience	WB

Storage

Storage:

Store at -20°C. Stable for one year after shipment.

Storage Buffer:

PBS with 0.02% sodium azide and 50% glycerol pH 7.3.

Aliquoting is unnecessary for -20°C storage

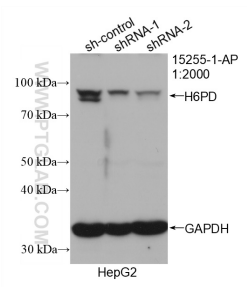
For technical support and original validation data for this product please contact:

T: 4006900926

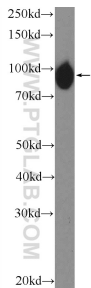
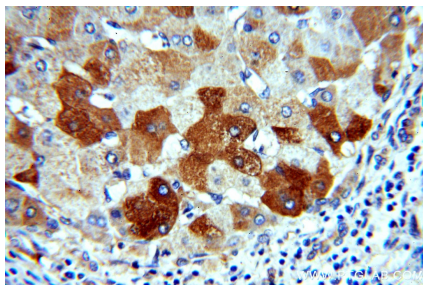
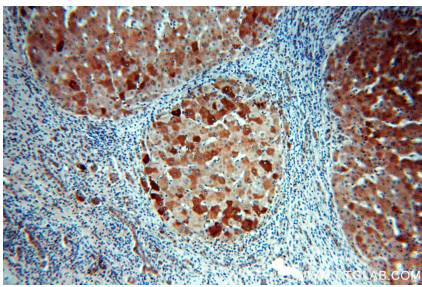
E: Proteintech-CN@ptglab.comW: ptgcn.com

**This product is exclusively available under Proteintech
Group brand and is not available to purchase from any
other manufacturer.**

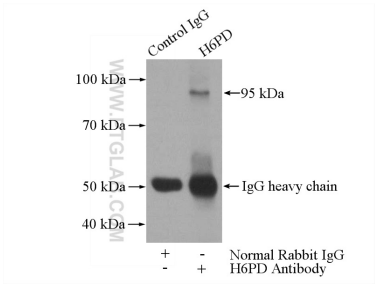
Selected Validation Data



WB result of H6PD antibody (15255-1-AP; 1:2000; incubated at room temperature for 1.5 hours) with sh-Control and sh-H6PD transfected HepG2 cells.



HepG2 cells were subjected to SDS PAGE followed by western blot with 15255-1-AP (H6PD Antibody) at dilution of 1:1000 incubated at room temperature for 1.5 hours.



IP result of anti-H6PD (IP:15255-1-AP, 4ug; Detection:15255-1-AP 1:1000) with HepG2 cells lysate 1600ug.