

For Research Use Only

LOXL2 Polyclonal antibody

Catalog Number: 15232-1-AP **1 Publications**



Basic Information

Catalog Number: 15232-1-AP	GenBank Accession Number: BC000594	Purification Method: Antigen affinity purification
Size: 450 µg/ml	GeneID (NCBI): 4017	Recommended Dilutions: WB 1:500-1:3000 IHC 1:50-1:500
Source: Rabbit	UNIPROT ID: Q9Y4K0	
Isotype: IgG	Full Name: lysyl oxidase-like 2	
Immunogen Catalog Number: AG7083	Calculated MW: 774 aa, 87 kDa	
	Observed MW: 68 kDa, 100 kDa	

Applications

Tested Applications: IHC, WB, ELISA	Positive Controls: WB : A431 cells, MDA-MB-453s cells, HeLa cells IHC : human breast cancer tissue,
Cited Applications: WB	
Species Specificity: human	
Cited Species: human	
Note-IHC: suggested antigen retrieval with TE buffer pH 9.0; (*) Alternatively, antigen retrieval may be performed with citrate buffer pH 6.0	

Background Information

LOXL2, also named as WS9-14, belongs to an amine oxidase family whose members have been implicated in crosslink formation in stromal collagens and elastin, cell motility, and tumor development and progression. LOXL2 activity might be a crucial modulator of Snail, providing an additional control mechanism of EMT and tumor progression. Increased LOXL2 expression in colon and esophageal cancer may contribute to tumor progression.

Notable Publications

Author	Pubmed ID	Journal	Application
Xiaomin Ding	37056396	J Cancer	WB

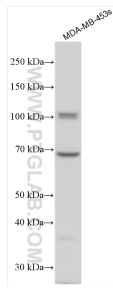
Storage

Storage:
Store at -20°C. Stable for one year after shipment.
Storage Buffer:
PBS with 0.02% sodium azide and 50% glycerol pH 7.3.
Aliquoting is unnecessary for -20°C storage

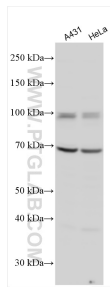
For technical support and original validation data for this product please contact:
T: 4006900926 E: Proteintech-CN@ptglab.com W: ptgcn.com

This product is exclusively available under Proteintech Group brand and is not available to purchase from any other manufacturer.

Selected Validation Data



Various lysates were subjected to SDS PAGE followed by western blot with 15232-1-AP (LOXL2 antibody) at dilution of 1:1500 incubated at room temperature for 1.5 hours.



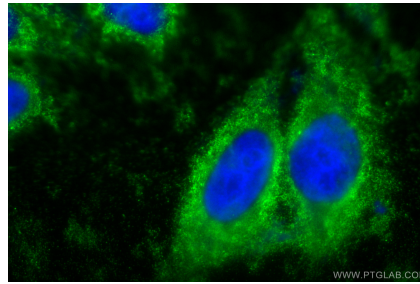
Various lysates were subjected to SDS PAGE followed by western blot with 15232-1-AP (LOXL2 antibody) at dilution of 1:1500 incubated at room temperature for 1.5 hours.



Immunohistochemical analysis of paraffin-embedded human breast cancer tissue slide using 15232-1-AP (LOXL2 antibody) at dilution of 1:200 (under 10x lens. Heat mediated antigen retrieval with Tris-EDTA buffer (pH 9.0).



Immunohistochemical analysis of paraffin-embedded human breast cancer tissue slide using 15232-1-AP (LOXL2 antibody) at dilution of 1:200 (under 40x lens. Heat mediated antigen retrieval with Tris-EDTA buffer (pH 9.0).



Immunofluorescent analysis of (-20°C Ethanol) fixed HepG2 cells using LOXL2 antibody (15232-1-AP) at dilution of 1:400 and Coralite® 488-Conjugated AffiniPure Goat Anti-Rabbit IgG(H+L).