

For Research Use Only

# YWHAH Polyclonal antibody

Catalog Number: 15222-1-AP

Featured Product

6 Publications



## Basic Information

### Catalog Number:

15222-1-AP

### Size:

359 ug/ml

### Source:

Rabbit

### Isotype:

IgG

### Immunogen Catalog Number:

AG7435

### GenBank Accession Number:

BC003047

### GeneID (NCBI):

7533

### UNIPROT ID:

Q04917

### Full Name:

tyrosine 3-monooxygenase/tryptophan 5-monooxygenase activation protein, eta polypeptide

### Calculated MW:

28 kDa

### Observed MW:

28 kDa

### Purification Method:

Antigen affinity purification

### Recommended Dilutions:

WB 1:500-1:2000

IP 0.5-4.0 ug for 1.0-3.0 mg of total protein lysate

IHC 1:50-1:500

IF/ICC 1:10-1:100

## Applications

### Tested Applications:

WB, IHC, IF/ICC, IP, ELISA

### Cited Applications:

WB, IF, IP

### Species Specificity:

human, mouse, rat

### Cited Species:

human, mouse, rat

### Positive Controls:

WB : human brain tissue, A431 cells, mouse brain tissue, NIH/3T3 cells, Raji cells

IP : NIH/3T3 cells,

IHC : human skin cancer tissue, human stomach tissue

IF/ICC : Hela cells,

**Note-IHC: suggested antigen retrieval with TE buffer pH 9.0; (\*) Alternatively, antigen retrieval may be performed with citrate buffer pH 6.0**

## Background Information

YWHAH (also known as 14-3-3 eta) is a member of 14-3-3 proteins which were the first phosphoserine/phosphothreonine-binding proteins to be discovered. 14-3-3 family members interact with a wide spectrum of proteins and possess diverse functions. Mammals express seven distinct 14-3-3 isoforms (gamma, epsilon, beta, zeta, sigma, theta, tau) that form multiple homo- and hetero- dimmers. 14-3-3 proteins display the highest expression levels in the brain, and have been implicated in several neurodegenerative diseases, including Alzheimer's disease and amyotrophic lateral sclerosis. This antibody was raised against the full-length YWHAH.

## Notable Publications

Author	Pubmed ID	Journal	Application
Jiyi Huang	29175072	Eur J Pharmacol	WB
Jia Song	30606233	J Exp Clin Cancer Res	WB, IF, IP
Jiarui Liu	33987186	Front Cell Dev Biol	WB

## Storage

### Storage:

Store at -20°C. Stable for one year after shipment.

### Storage Buffer:

PBS with 0.02% sodium azide and 50% glycerol pH 7.3.

Aliquoting is unnecessary for -20°C storage

For technical support and original validation data for this product please contact:

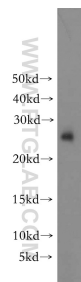
T: 4006900926

E: [Proteintech-CN@ptglab.com](mailto:Proteintech-CN@ptglab.com)

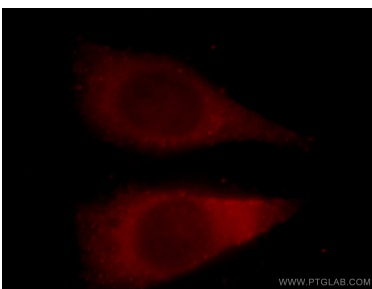
W: [ptgcn.com](http://ptgcn.com)

**This product is exclusively available under Proteintech Group brand and is not available to purchase from any other manufacturer.**

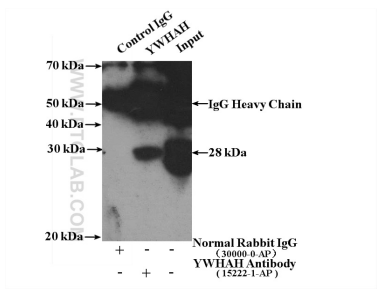
Selected Validation Data



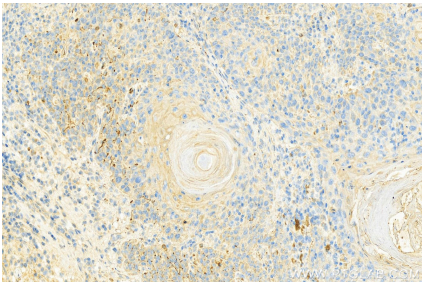
human brain tissue were subjected to SDS PAGE followed by western blot with 15222-1-AP (YWHAH antibody) at dilution of 1:300 incubated at room temperature for 1.5 hours.



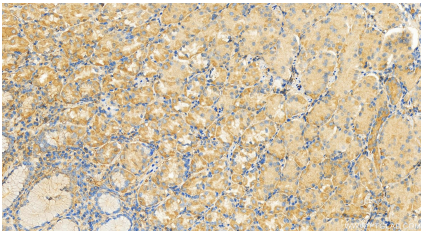
Immunofluorescent analysis of HeLa cells, using YWHAH antibody 15222-1-AP at 1:25 dilution and Rhodamine-labeled goat anti-rabbit IgG (red).



IP result of anti-YWHAH (IP:15222-1-AP, 4ug; Detection:15222-1-AP 1:1000) with NIH/3T3 cells lysate 1600ug.



Immunohistochemical analysis of paraffin-embedded skin cancer slide using 15222-1-AP (YWHAH antibody) at dilution of 1:200 (under 20x lens). Heat mediated antigen retrieval with Tris-EDTA buffer (pH 9.0).



Immunohistochemical analysis of paraffin-embedded human stomach tissue slide using 15222-1-AP (YWHAH antibody) at dilution of 1:200 (under 20x lens). Heat mediated antigen retrieval with Tris-EDTA buffer (pH 9.0).